

1. SL-Server**Index:**

1.0 Installation	2
1.1 Installation description hardware	3
1.2 Installation description software	4
1.3 Manual	9
1.3.1 Language Choice	9
1.3.2 Security Management	10
1.3.2.1 Activate Administrator	10
1.3.3 Setup	11
1.3.4 Communication setup	13
1.3.5 Main control	14
1.3.6 Loco control (Overview all functions)	16
1.3.7 Loco control	17
1.3.7.1 Loco control Setup	20
1.3.7.2 Point/ Signal control from loco control	22
1.3.8 Point/ Signal control	23
1.3.9 Turn Table control	25
1.3.10 Sequence Start	26
1.3.11 Feedback Monitor & Control	27
1.3.12 Relay Control	28
1.3.13 Speed Measurement	29
1.3.14 Master Control & Settings	31
1.3.15 Emergency Stop	32
1.3.16 Find & Check	33
1.3.17 Summary Loco Names	34
1.3.18 Remove settings	36
1.3.19 IP Address Settings	37
1.3.20 Information	39
1.4. Track overview	40
1.5. Technical specifications	44
2.0. Update	45
3.0. Trouble Shooting	51

1.0 Installation

Installation description for extending PC with a "Slave PC". This "Slave PC" is a cMT-SVR-100 standalone server. Nearby there is also a set available for extending a Master ⇔ Slave PC combination with a 2. Slave (cMT-SVR-100 standalone server).

Delivery scope: (extending for one Master PC with one Slave)

- 1x cMT-SVR-100
- 1x Power supply 24V DC/ 1A
- 1x PC adapter (PC)
- 1x cMT-SVR adapter (SVR)
- 1x RS232 ⇔RS485 adapter (Half-Duplex)
- 2x Network cable (2 meter)

Delivery scope: (extending for one Master⇔Slave PC set with a 2. Slave)

- 1x cMT-SVR-100
- 1x Power supply 24V DC/ 1A
- 2x PC adapter (PC)
- 1x cMT-SVR adapter (SVR)
- 2x RS232 ⇔RS485 adapter (Full-Duplex)
- 1x Network cable (1 meter)
- 2x Network cable (2 meter)
- 1x Network cable (3 meter)
- 1x Y-adapter

Extra set for 3 Slave

- 1x PC adapter (PC)
- 1x RS232 ⇔RS485 adapter (Full-Duplex)
- 1x Network cable (2 meter)
- 1x Y-adapter

Note: It will be recommended to use a Full Duplex connection if you decide more than 2 devices!

Master PC ⇔ SL-Server, Half Duplex is possible

Master PC ⇔ SL-Server ⇔ Slave PC, Full Duplex is required.

1.1 Installation description hardware

Preparation:

There must be a Wi-Fi network available, this network may connect to Internet, but is not necessary. A free RJ-45 connection must be available.

Extending for one Master PC with one Slave (cMT-SVR-100)

Connection between Master ↔ Slave will be made with network cables.

There are 2 possibilities:

- 1) The cMT-SVR-100 will be mounted very close to the de master!
- 2) The cMT-SVR-100 will be mounted very close to the network connection!

- 1) With the adapters (including) all connection will be made.

Connect the adapter "SVR" to the 9 pole connector of the cMT-SVR-100

Connect the RS232 ↔ RS485 adapter to the 9 pole connector of the PC (preference to Com1), next connect the adapter "PC" tot his converter.

Connect both adapters with the supplied network cable. This network cable will be used as RS485 connection between Master PC and the cMT-SVR-100, this cable is relative short (only one pair will be used, 4 pair available).

- 2) The connections will be made on the same way as here above, but....

Now the difference is the connection between Master PC and cMT-SVR-100, the distance is longer than in situation 1!

Because it's a RS485 connection, it could be necessary, to place on both sides a termination resistance (120 ohm).

Connect also a network cable to the cMT-SVR-100 at port "**LAN-1**" and connect this cable to your Router or connect it to a switch of your network.

"**LAN-2**" is already setup at IP address 192.168.178.254. This port will be used for local changes and Service. Of course you can change this IP address by yourself.

Extending of a Master PC with an existing Slave PC

Connection between Master ↔ Slave ↔ Slave will be made with network cables.

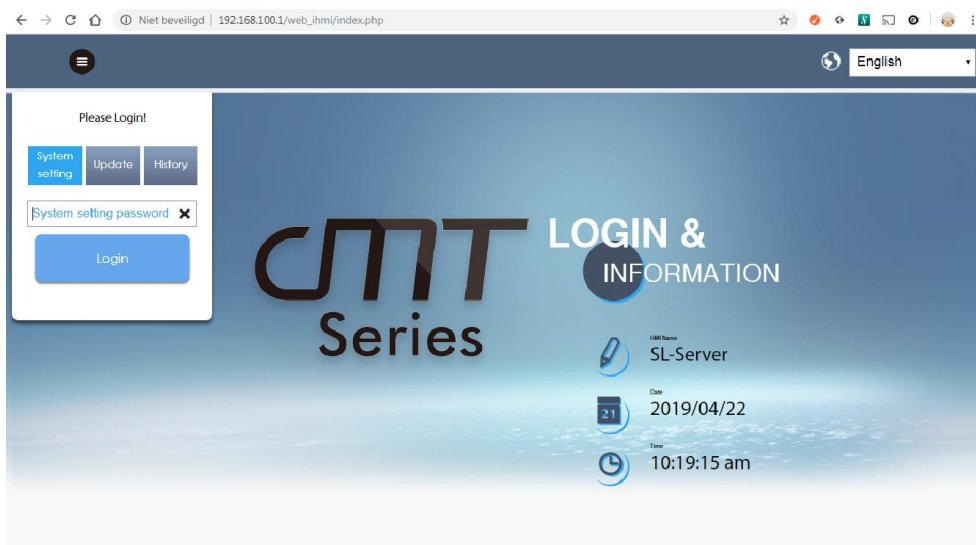
We use the same adapters as here above, but there is also add a Y-Adapter and 2 extra network cables. The connection between the existing Master and Slave will be removed for the new one. With the Y-adapter all connection comes together.

1.2 Installation description software

- Check with an "IP-scanner" witch address is given away to the cMT-SVR-100.
- Start your PC or Smartphone and start your Internet browser and enter the required IP- address what you found with the "IP scanner".
- After a while, the next picture will be appeared.

Second possibility; connect the cMT-SVR-100 at port "LAN-2" with your network.

- Setup your PC in the IP same range as the cMT-SVR-100 (192.168.178.254), your choice could be 192.168.178.100, but never the same as the address as the cMT-SVR-100! Mostly the range is running from 1...254. (Mostly #1 is reserved for the router)
- Start a PC at your Smartphone and start your Internet browser and enter the required IP- address.
- After a while, the next picture will be appeared.



Log in:

Choose "System" and log in with "sl"

After log in, you can change the IP address of LAN-1 (possible also LAN-2)



Your network has an address range for e.g. 192.168.0.xxx; adjust LAN-1 at 192.168.1.xxx
xxx is a free address in your network.

Net Mask:

Mostly this part = 255.255.255.0

So the whole range you can use is here from 1...254 for your IP address

Gate Way:

For synchronization of the Time it's recommended to set the Gate Way address, this address is the same address as your router, so 192.168.1.1

DNS:

Here you can fill the "Google DNS" address, so 8.8.8.8

Start the **SOFTLOK** PC and go to setup (F6), choose "PC connection" and setup COM port (preference com 1) setup the speed (Baud rate) to 19K2 (value 6), PC is Master (setup to 0) choose save and go to main menu. For more information read the manual of **SOFTLOK**.

Connect the supplied power adapter to the cMT-SVR-100 (green connector).

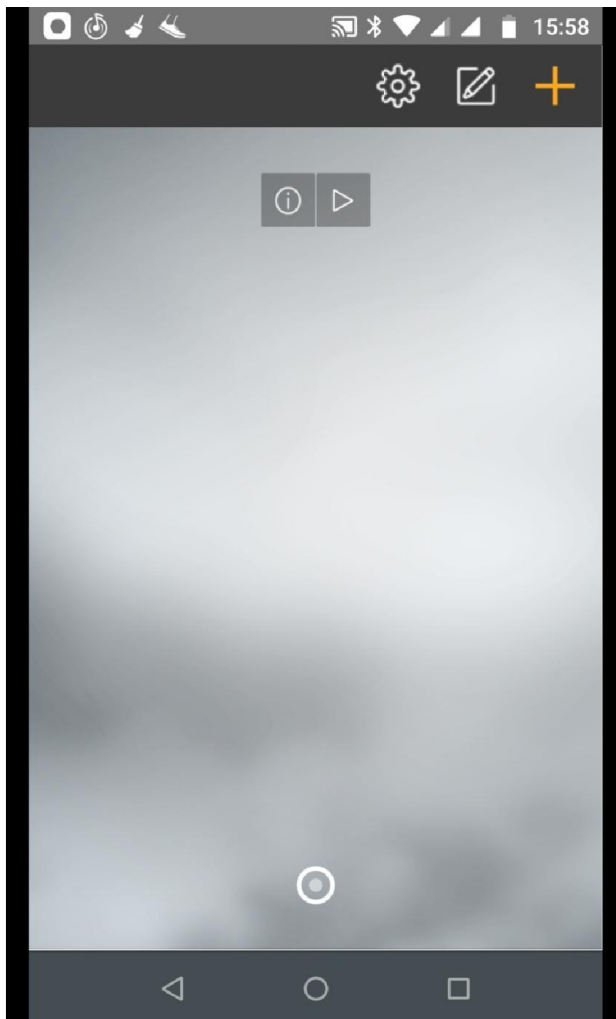
After starting up of the cMT-SVR-100, you can make connection with your Smartphone (after download and installation of the cMT- viewer **)

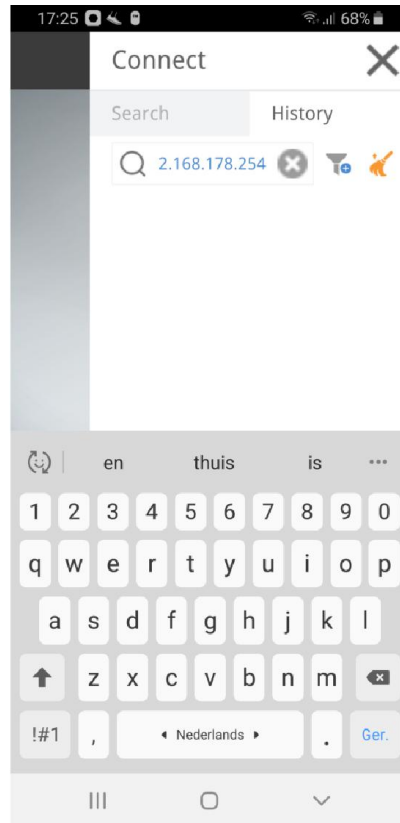


** The cMT-viewer is free for download available in the App-store (Android and Apple)

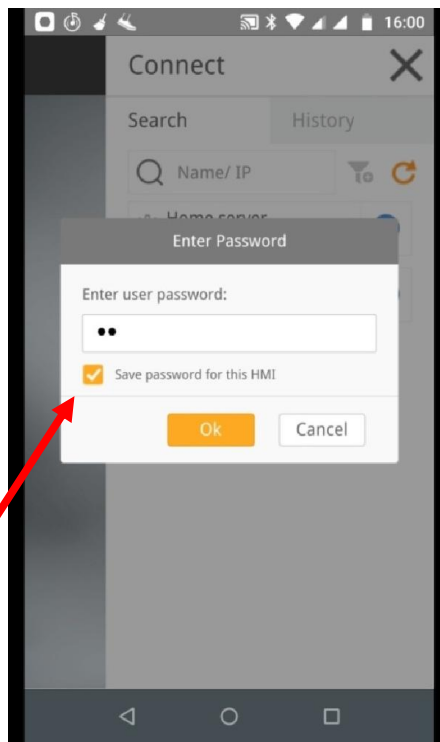
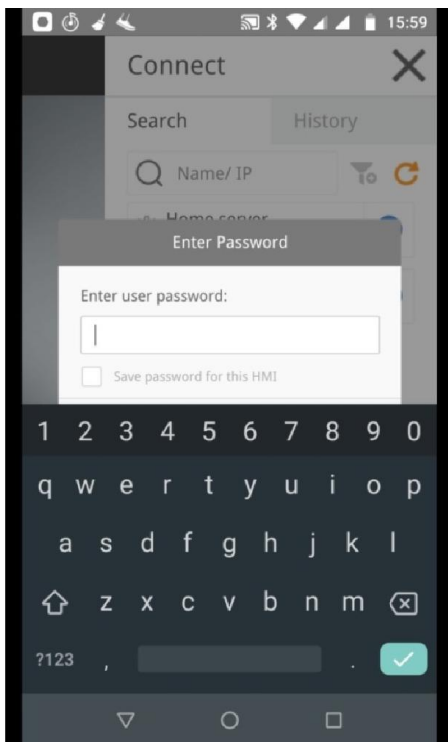
Tip: you can also the cMT viewer install on your PC

When you start the "App cMT-viewer" for the first time. Touch in the right corner the "Plus symbol".



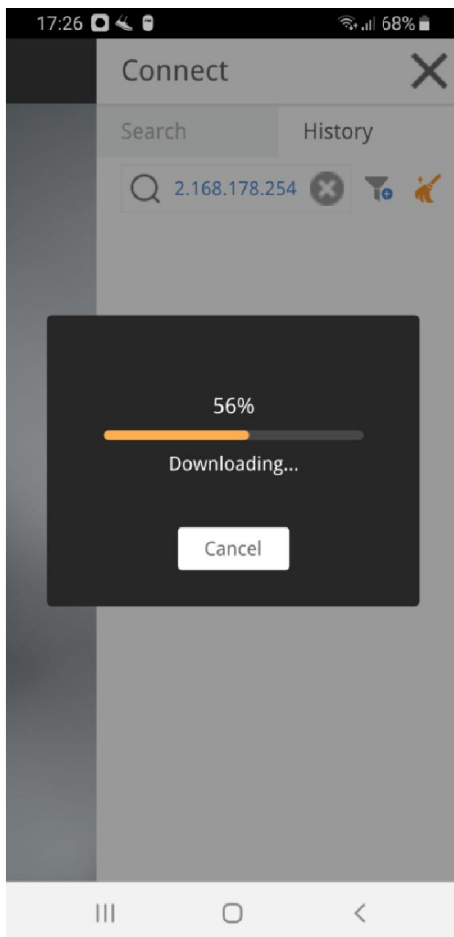


Enter at "Name/IP" your IP address (Enter) of the cMT-SVR-100, then there will be pop up with the question: enter password?



Type "sl" and Enter, now the application will be down loaded to your Smartphone (normally only one time, if there is no update for the cMT-SVR-100)

Type [sl] and "save password for this HMI" if you want, then touch here!



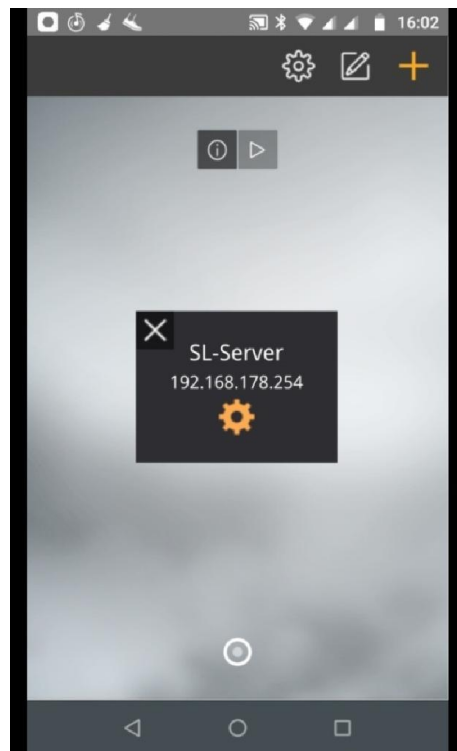
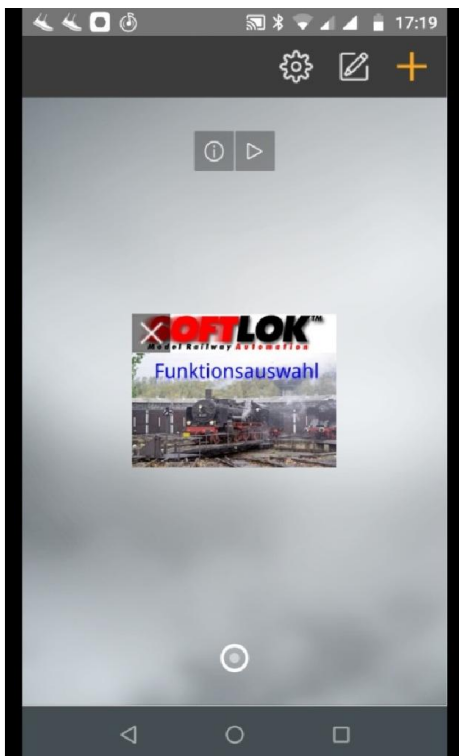
Licence Pro Version

For ANDROID & IPHONE

	Free	Pro	Private
Loco Controller	5	200	200
Multi User	1	6	6
Turn Table	No	Yes	Yes
Points Control	1-16	1-350	1-350
Signal Control	1-16	1-400	1-400
Extension Control	No	Yes	Yes
Saving Settings	Limited	All	All
Track View	No	No	Yes



Download in progress, after a while the next window (only once)



or started by the next time: Touch the pictogram and the application will be opened

After a few seconds, a start screen will appear:

- Free version, you have to wait for a while, before you can start the next screen.
- Pro version, touch the button in the right corner to start the main screen.

The screen is as follow:



Free version



Pro version

Free version:

This version is limited for a few functions, see table.

- ✓ Suitable for one user (loco control)
- ✓ Control Point and Signal for numbers 1...16
- ✓ Saved only loco settings for number 1...5
- ✓ Waiting time after download App.
- ✓ Upgrade possibility to Pro version

Pro Version:

- ✓ Suitable for maximum 6 users (6 loco control available)
- ✓ Control all Point and Signal 0...350
- ✓ Control all Signal and Signal 0...400
- ✓ Control the MD-4 decoder
- ✓ Turn Table programming and control
- ✓ Control all Sequence starts 0...400
- ✓ Control Relay 1...32
- ✓ Monitor & Control Feedback 1...696
- ✓ Speed Measurement
- ✓ Master Control & Settings
- ✓ Saved all loco settings 1...200
- ✓ No waiting time after download App.
- ✓ Free update possibility (extending future)

1.3 Manual

Purpose:

With this "App" you can control your loco "by hand" with all possible functions with your own Smartphone.

Which means, 6 users (maximum 6 Smartphone) at the same time could control their own loco independent (Pro version).

Naturally it's the meaning; every user must use a different loco number!

In due course, there will be a special version for Tablets, so that you will have 2 loco controls at one screen.

Beside of loco speed, all extra functions (F1...F15) can be controlled, if they are available in de loco decoder. This possible for all versions of **SOFTLOK** from V12.5

Even Points and Signals can be switched, this very helpfully when you have a large Model railway, to check the working of a point driver or decoder.

1.3.1 Language Choice

Language Choice:

By touching one of the 3 flags you can change the default language, each time you start the application you have make your choice , standard is English.

SOFTLOK™
Model Railway Automation

Licence Pro Version

For ANDROID & IPHONE

	Free Version	Pro Version
Loco Controller	5	200
Multi User	1	6
Turn Table	No	Yes
Points Control	1-16	1-350
Signal Control	1-16	1-400
Extension Control	No	Yes
Saving Settings	Limited	All

NL D EN

START

Afterwards you can change the language by touching the flag symbol in the main menu. To avoid much text, this application used graphic symbols so far it's possible

At this moment the application has the follow languages:

- Dutch
- German
- English

Language choice can be made directly after starting of this application or later.

Press start to begin (if **START** is **Green** the no login is required, see chapter 1.3.3)

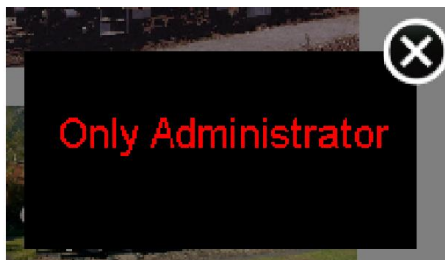
1.3.2 Security Management

Since Version V5.x the security is changed! The Pro Version can be used for more users at the same time. To prevent that invited users make some changes which are not necessary for e.g. loco control, these settings are blocked with a password. Only the main user (Administrator) can make this adjustment.

The Free Version has no security management, because there is only one user.

Which parts are only for the main user?

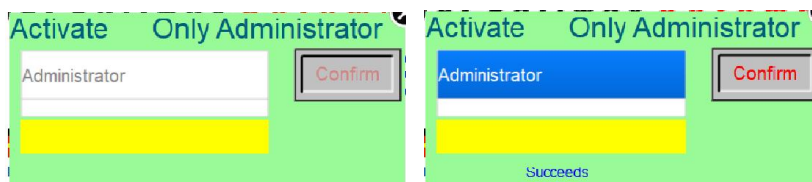
- Loco Control-1 (is always reserved for the main user)
- Loco Control Setup (1-6)
- Point Control
- Signal Control
- Main setup
- S-Start control
- Feedback control
- Activating Point test
- MD-4 Decoder
- Relay Control
- S-Start Control (in window Loco Control 1-6)
- Master Control & Settings



When a user tries to activate one of these items which are protected by log in, the message "Only Administrator" will appear in a pop-up window.

1.3.2.1 Activate Administrator

To activate the administrator function, you have to touch and hold for at least 3 second here:



After a few seconds a new pop-up window will appear.

Choose [Administrator] Introduce password**
 Touch on [confirm] and close window

After log in, you will be able to make changes in Setup, You will not automatically log out. After start up of SL-Server or Cell phone, you have to log in again.

** Password will be given separately. Login without Password, see next chapter!

1.3.3 Setup

Pop-up Window will appear



Here you can see preview some settings:

- In Loco Controller window
- Loco Go/ Stop (for all locos)
 - Or one loco (Vo)
 - Auto Login Enabled (used, when you the only user)
 - LAN-1 Settings (Default), used for a simple changes
 - Enable Demo Track
 - Auto Sync After Start

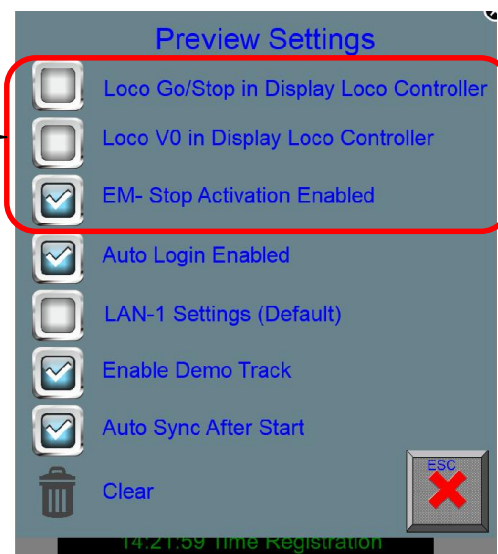
No Login required, if you are the only user, then make this selection!



After start, SL-Server will be automatically updated, if SL-Master was already running



You can select one of these three, If you select EM-Stop, than you can activate EM-Stop in the Main window and in Loco Control



1.3.4 Communication setup

Communication setup:

(These settings are only available for the main user)

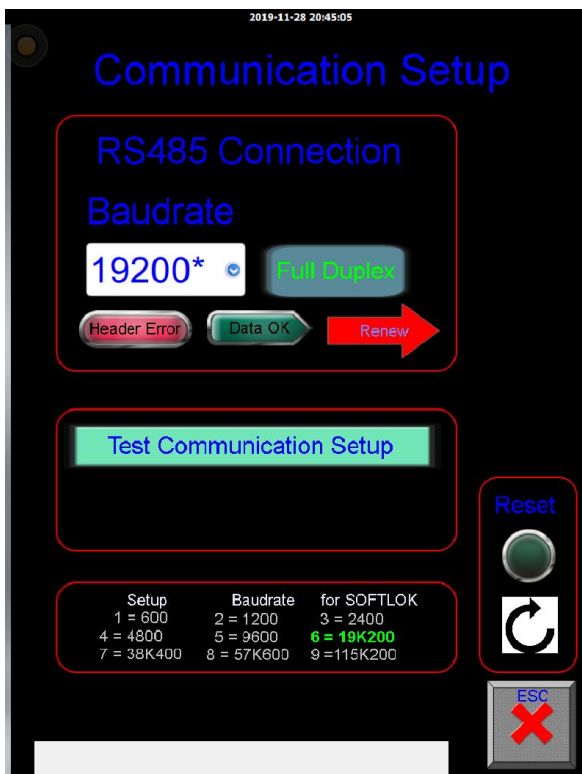


The speed (baud rate) is standard at 19K2.

It could be by circumstances that this setting is too high or too low, now you can change this setting by touching this picture.

Type of connecting is standard at 4 wires (Full Duplex), if you use totally more than 2 devices it's recommend to select 4 wires (you must have installed Full Duplex converters too), otherwise you can use 2 wire connections (Half Duplex).

There is a pull down menu, in here you can change the default setting to your own setting, after changing, and you must acknowledge this setting by touching the red arrow. Don't forget the speed changing must also do in all Pc's (Master / Slave)!



This setting will be automatically saved for the next time.

After changing the Baud rate or RS485, you must touch the red arrow



Test Communication Setup:

After activating this button, the SL-Server sends a command to the master, Function-1 of Loco-1 will be switch On and Off. If the Master understands the command, it will send a command back. If [Data OK] light up and No [Header Error] appear, the Baud rate is set OK. This function stops automatically after the test, you can repeat the test if you want.

Reset function:

When one of more loco controller, point, signal, turn table, S-Start or Feedback not will be released after using, then with this button you can reset all controllers.

1.3.5 Main control



Point/Signal pictures:

You can choose for point or signal control, this is possible for one user independent, it means the second user get the same controller as the first user and can change the same points/ signals as the first user.

Controlling of maximum 350 points/ signals (Pro version), because it was not possible to show 350 buttons on the same window, its divide in groups of 16.

Turn Table picture: (No login required)

You can control a Turn Table; this is possible for one user independent, it means the second user get the same controller as the first user and can change the same points/ signals as the first user.



Change to setup: (see from chapter 1.3.14)

Touching the bottom screen switch over to another symbols (These settings are only available for the main user)



S-Start:

You can control all (0-400) Sequence Starts"



Feedback:

Open the window for Feedback Monitoring & Control



Relay:

Open the window for Relay Control (Relay control can be locked, see chapter 1.3.2)



Speed Measurement:

Open the window for speed measurement



Master Control & Settings

Open de window for control & settings of the Master PC

Demo



Track Overview Demo example
(See Preview settings)

1-6



Track Overview Custom made
(See Preview settings)

1.3.6 Loco control (Overview all functions)

Here you see a picture of loco control-1.

The diagram illustrates the loco control interface, divided into two main sections: the main control panel and the 'Setup' menu.

Main Control Panel:

- Loco Name:** ICE-7
- Actual loco number (1-200):** 1
- Emergency stop active:** Indicated by a red STOP sign.
- Loco-Stop active:** Indicated by a green train icon.
- Actual speed:** Shown on a circular speedometer (0-15).
- Digital Step range:** 0-14
- Maintenance:** Indicated by a gear icon.
- Speed Control:** Buttons for V++ (Increase speed in programmed step), V+ (Increase speed +1), V- (Decrease speed -1), and V-- (Decrease speed in programmed step).
- Direction Control:** Buttons for +1, +10, -1, and -10 to select a different loco number with these buttons, in steps of 10.
- Points/Signal Control:** A 'Points Signals' button (green) to change settings (only administrator).
- Change direction:** A green 'R' button (Green = forward).
- Activate F0-Function:** A red 'F0' button (Green = active).
- Go/ Stop:** A red 'Stop' button.
- Function buttons:** A grid of buttons F1 through F12 (Green = active).
- Back to main menu:** An 'ESC' button with a red X.
- S-Start:** A button for sequence Nb. 1...99 (log in).

Setup Menu (Engineer-1):

- Actual loco number:** 1
- Digital Address & Name:** ICE-7 (12 character)
- Maintenance (%):** 0%
- Make Functions visible (Green = active):** Buttons for F1-F12, F13-F15, and ESC.
- Choice of Digital Steps:** Buttons for 0..14, 0..27, 0..28, and 0..31.
- S-Start Number 1...99:** 1
- Save settings:** A floppy disk icon.
- This menu (pop-Up) close window:** An 'ESC' button with a red X.

1.3.7 Loco control

2 versions:

- Free version and Pro version
- Free version is limited for some functions



Upgrade free version to Pro version:

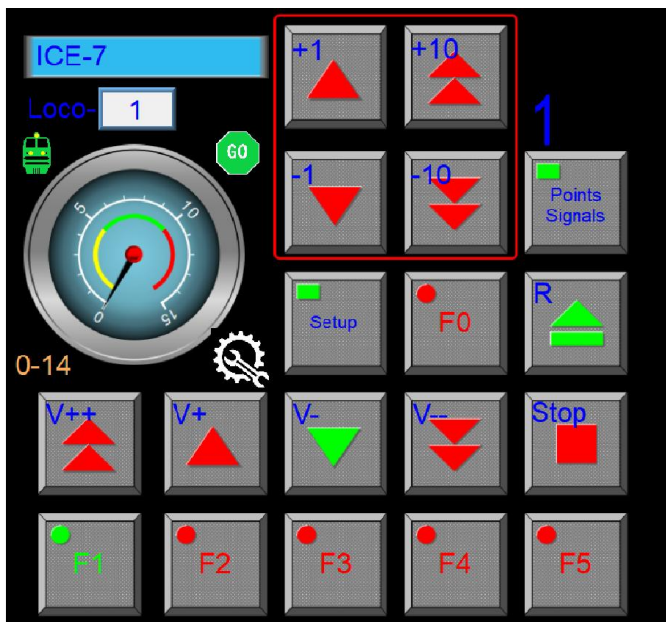
If you have the free version and decide to have an Upgrade the pro version, than you need a key code. This key code can you order by your vendor of this software.

Choose one of the six loco pictures to select a loco controller (1-6).each with one loco control (Pro version); if a user touches one of these pictures, another user can't touch the same picture to select a loco controller!

This protection is done to prevent that different users are using the same loco controller. Totally there are 6 loco controllers available.

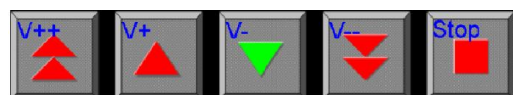
All 6 loco controller's works independent from each other, so maximum of 6 different loco's can be control manually, if each user select a different loco number.

If you select a loco number which is already active on another loco controller then actually you control with 2 loco controller one loco.



For the first time, there must be for each selected loco number made a setup. What kind of loco decoder is installed in this loco?

The numbers agree with the loco numbers of **SOFTLOK**, this number could be different of the digital address. It's helpfully to choose the digital address, the same as the loco number, but you have the possibility in this App. to enter the loco name and the digital address, this address is only for your information!

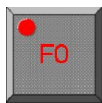


V+: with this button, the speed will increase with 1 step every time.

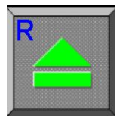
V -: with this button, the speed will decreased with 1 step every time

V++: with this button, the speed will increased with several steps (programmed in **SOFTLOK** Master.

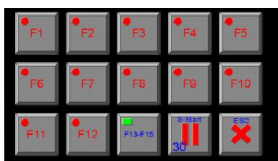
V--: with this button, the speed will decreased with several steps (programmed in **SOFTLOK** Master.



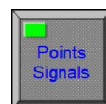
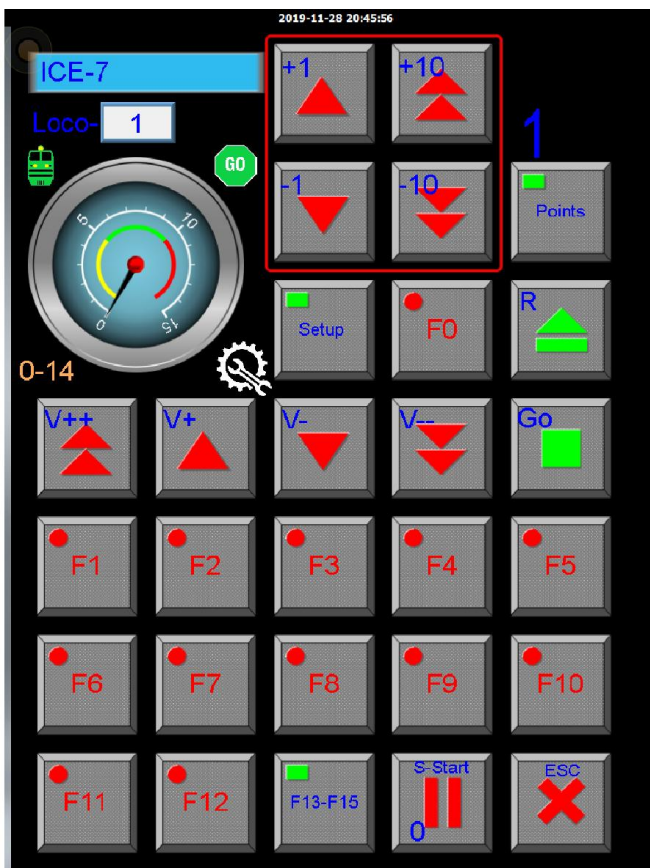
S-Function: if you touch this button, the S-Function will be active (mostly the front lightning of the loco), the button will be green after activating, so you can see if the S-Function is switched on. By touching this button again, it will be switch off, button will be red.



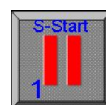
R-Function: By touching this button, the loco changed of direction, the loco will first stop (if the loco wasn't stand still) and then goes to the last known speed, the button change from color (green = forward, red = afterwards).



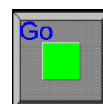
F1...F15: dependent witch digital system is chosen and how many function are available on the loco decoder, works this function the same as the F0-Function. **F13...F15** will be control in Pop-Up menu.



When this button is touched, the function buttons F6...F9 and F11...F15 will disappear and changed in Point/ Signal control



Set / Reset S-Start. This S-Start is the same number as the sequence number, for starting/ stopping this sequence. For security, this function here is only for the main user.



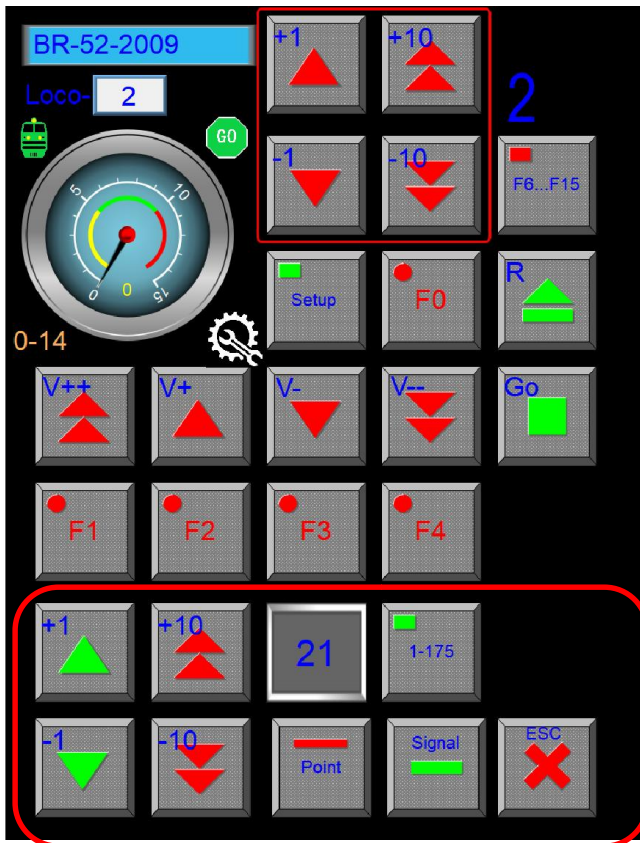
Loco Go/ Stop function, here for the selected loco number, but adjustable for All Locos (see Setup 1.3.2).

After choice number of speed steps (0-14, 0-27, 0-28, 0-31) some available functions will be released, but it doesn't say that all this function available in the loco decoder of this loco number.

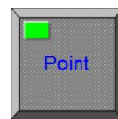
Even the Speedo meter will be changed, each digital system has her own maximum speed limit. By touching the diskette symbol your settings will be saved.

Maintenance Symbol

Off <95% >=95% >=100% >=150%



Here you see a new panel to control each point, by pressing here:

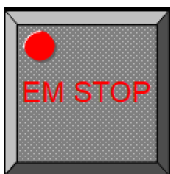


Now you can control each Signal

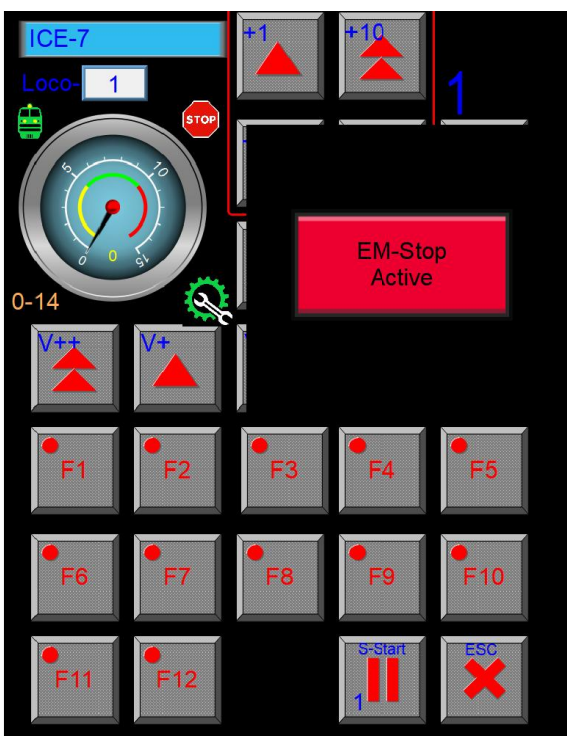


Switching back full loco control press

See further at chapter 1.3.7.2



If Emergency Stop is selected, then you can only de-activate the emergency stop in this window, or release this action at the Master/ Slave PC.

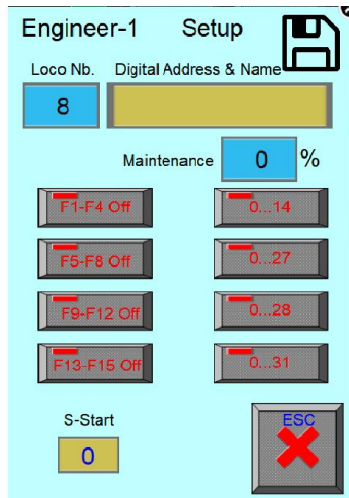


Emergency Stop is activated, by pressing the button, you can release the EM-Stop.

1.3.7.1 Loco control Setup



Activate the pop-up menu Setup; choose your digital system and functions: (These settings are only available for the main user)



- 0...14 (Märklin/ DCC/ FMZ)
- 0...27 (DCC)
- 0...28 (DCC)
- 0...31 (TRIX)

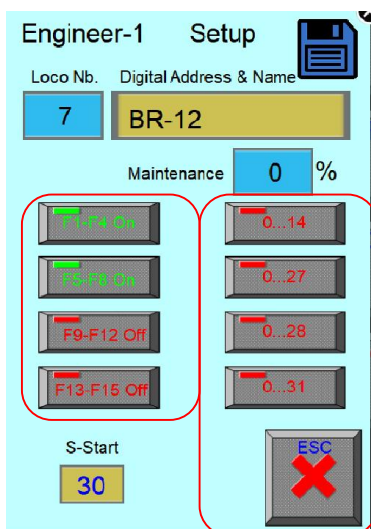
For each loco number, you can setup all the available functions. If you choose for 0-31, than automatically only functions H will be switched on.

When you fill the name in the window, you must end with the [Enter] button.

In maintenance window so see the actual running time in % against the adjusted time which is set in the SL-Master PC.

To close this window, touch the cross in the right corner.

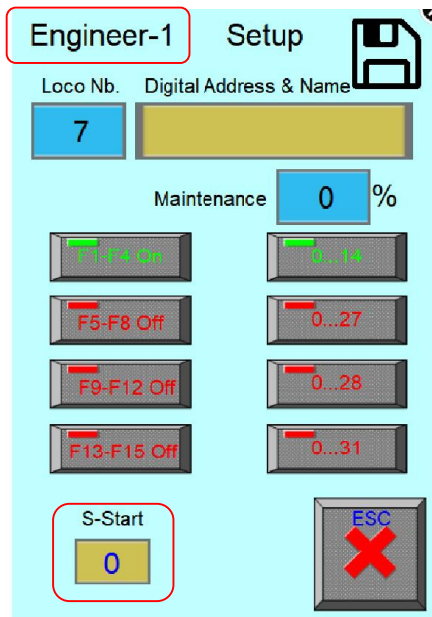
After editing of the loco name and press [Enter], the diskette symbol changed from color (blue). Now you have to click at the diskette symbol for saving the loco name in the Data Base.



Remark: The functions (F1...F15) must be setup in SOFTLOK first; it means they must have a digital address.

The loco name and loco address are pure for recognizing of the loco. It has no meaning for the function itself. The digital address in **SOFTLOK** is leading for controlling the loco.

The functionality which is given to each loco number will be saved for each loco number itself.



Here you select the S-Start number for this loco number. Most of the times the S-Start number is equal to the Loco number, but it's not necessary, This S-Start number is the number which belongs to the same sequence number.

E.G. For starting/ Stopping sequence 30 will be used S-Start number 30, but in this sequence runs not loco 30 but loco 2.



With this button you can now activate S-Start 30 by touching this button for at least 1 second (Safety function).

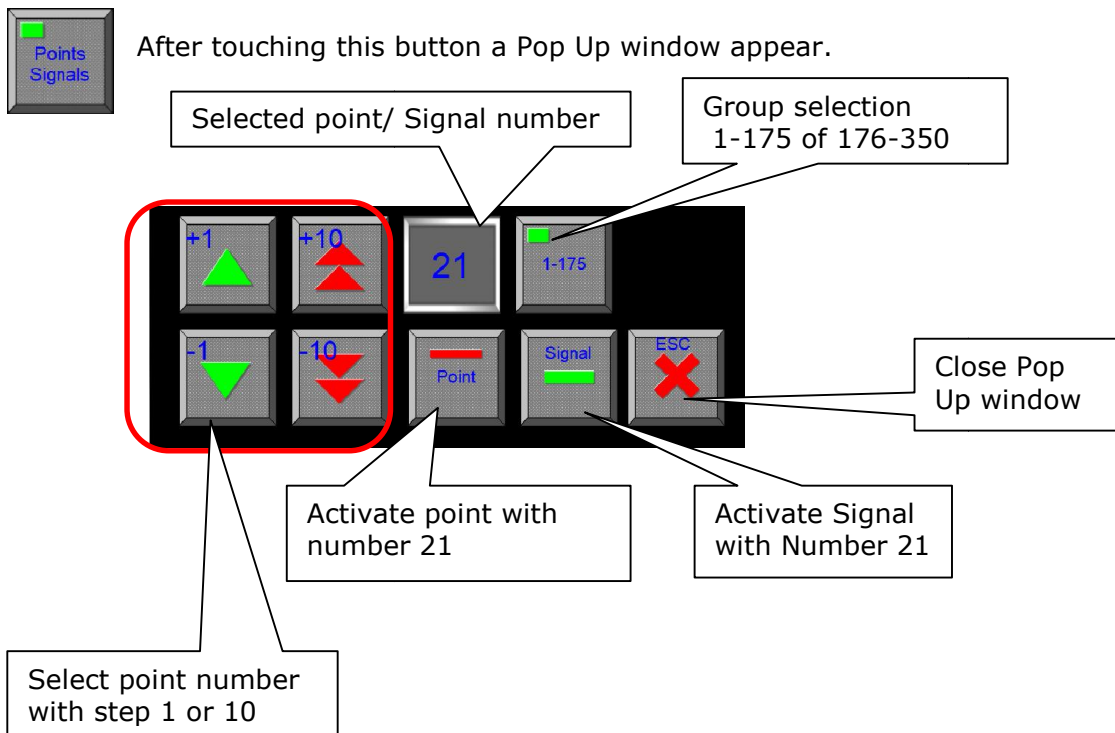


Touching again (for at least 1 second) and the S-Start will be reset.

Remark: to clear this loco number (No Speedo meter), please touch and hold the text "Engineer-1" for at least 3 seconds. Now all settings will be cleared including the loco name. You must only touch the Disk icon to save this.

1.3.7.2 Point/ Signal control from loco control

When you want during loco control, directly control any point, you can activate the Pop Up window, here you can select the point number and switch it.



By using the arrow keys, you can select a point/ Signal number between 1-1 75, if button "Group Selection" show 1-175. Afterwards you can activate the selected point/ Signal.



Signal control is only for number 1...350 possible. The button gives not the real Status of the Point or Signal.

1.3.8 Point/ Signal control

Group of Points

Active point number

Selection of point number

Testing a Point (only administrator)

After selection of a group of point/ signals, you can touch the right point/ signal number, the symbol button will change and color (red/green).

At the Master PC and connected Slave (PC) change the status of this point or signal.

Choose Time Interval

1 S 2 S 3 S 4 S

5 S 6 S 7 S 8 S

9 S 10 S 15 S 20 S

ESC

This Pop-up menu appears when you click on Test. Here you can select the switching time between 1...20 seconds.

Testing:

(These settings are only available for the main user)

Choose first the point, by clicking once at the right number and then click "Test", choose the desired switching time, press "ESC" to close Pop-Up menu. If any Point button will be pressed, the "Point test" will be stopped at once. During Test, a message will be on several screens!

Test MD-4 decoder (only administrator)

Switch Signal 5 to straight

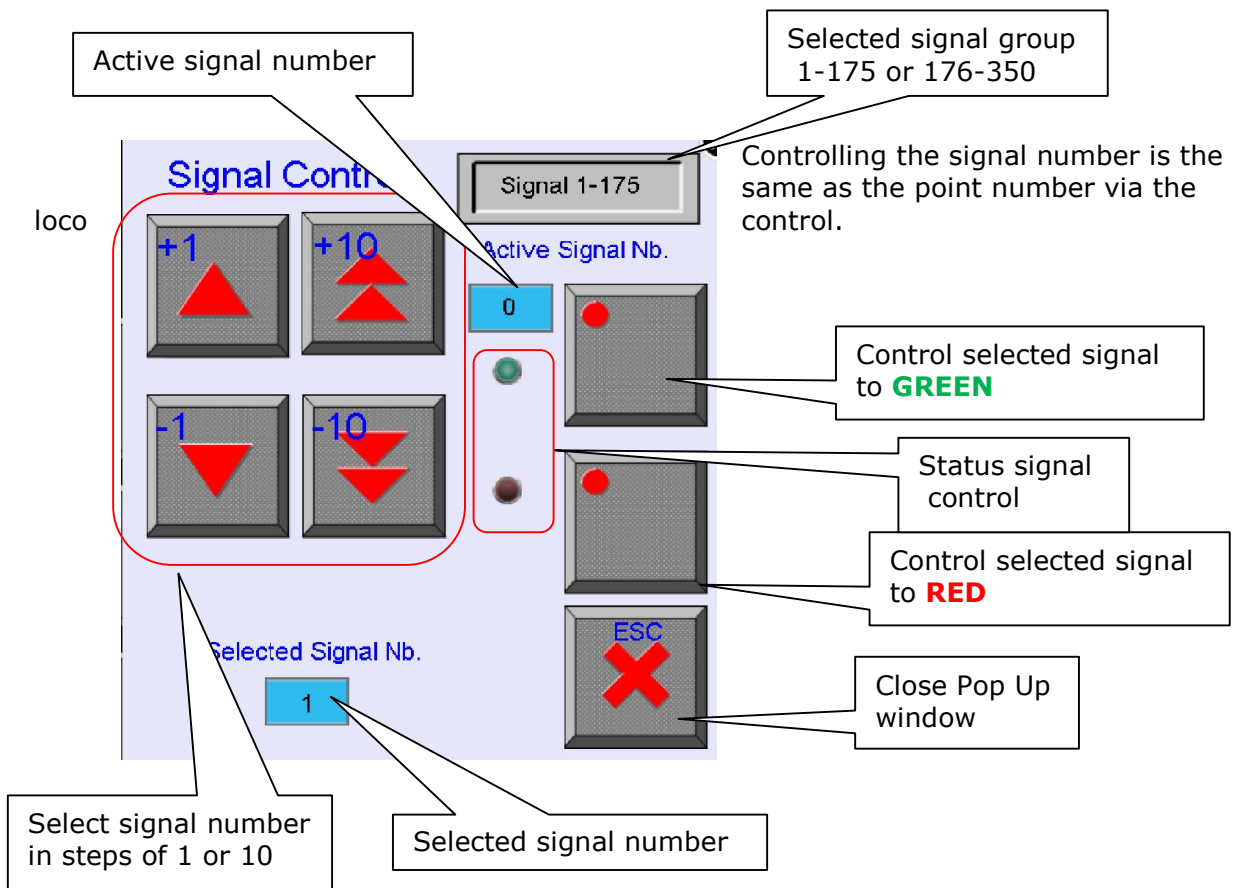
Back to main menu

MD-4 Decoder (Multi Signal Decoder)

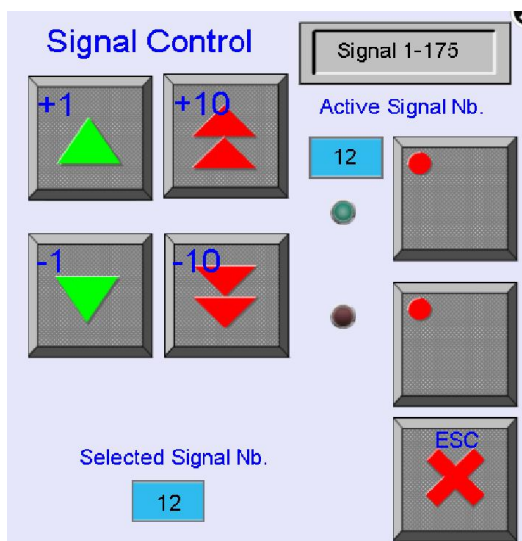
(These settings are only available for the main user)

With the MD-4 decoder, you can easily switch more than 2 sign pictures with one decoder output (see also description of MD-4 decoder)

After activating of this button, the next Pop-up menu appears.

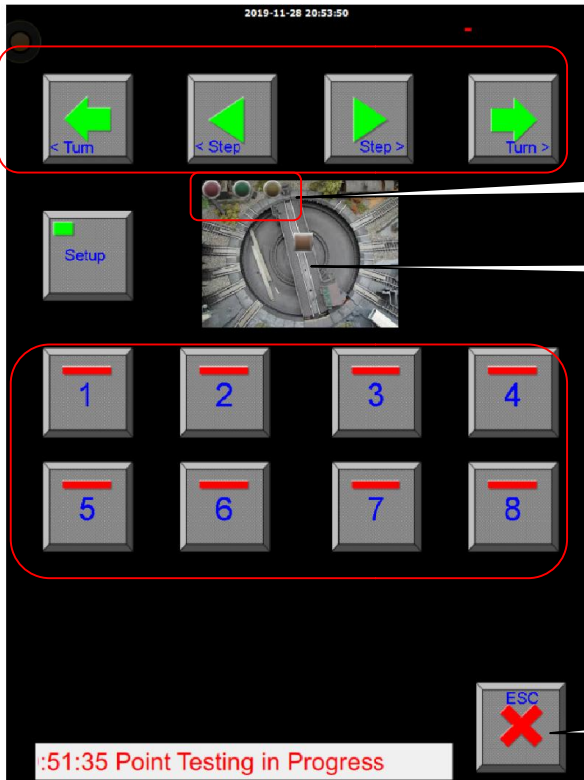


Because the control buttons are separated, now you can more than once touch the same button to **red** and/ or **green** for the next situation. This is necessary because of control the signal to **red**, once more control to **red**, for the next situation (see for further information description of MD-4 decoder).



Signal 12 is set to **green**

1.3.9 Turn Table control



Turn direction and 1 step

Status led Decoder 8687

Feedback bridge

For the first time, you must enter the setup to adjust the base address and the number of tracks. Even the programming is possible, if this was done already. Touch the button "Setup" and the next window will show.

Choice of track (here 1-8)

Back to main menu

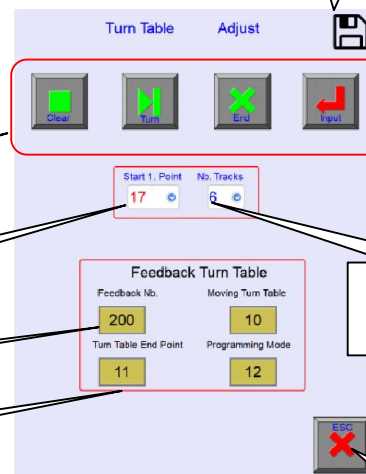
Save settings

Setup:

(These settings are only available for the main user)

With the 4 buttons the turn table can be programmed (See manual turn table and/ or **SOFTLOK**).

Below you must set the base address and the number of tracks.



Programming Turn table

Adjust base address

Feedback Number Bridge

Status Led 8687 Decoder

Number of tracks (1...12)

Close window

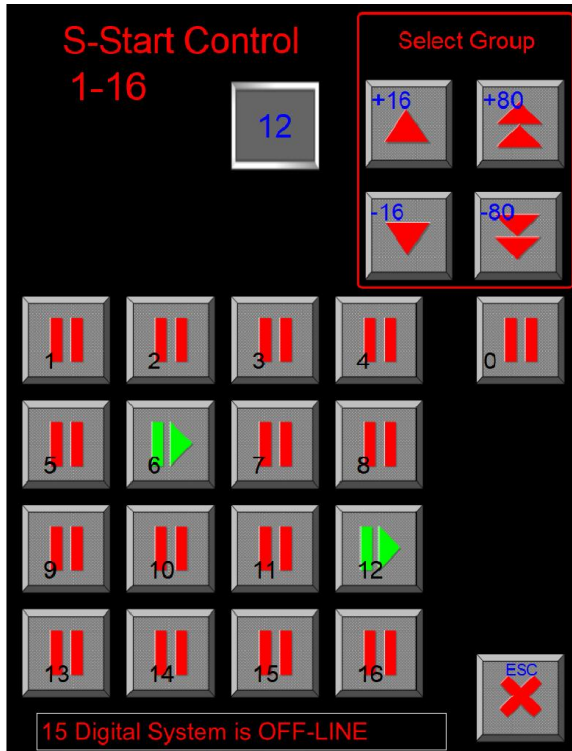
The base address is the first address (decoder) of controlling the turn table (see also the manual of **SOFTLOK**). The number of tracks let you show, how many buttons are on the screen for controlling.

After making changing's, you can touch the blue diskette symbol to save your adjustments.

To control the turn table speaks for itself, first you activate direction and then you choose one of the showing tracks (here 1-8). For more detailed explanation see description of the turn table and the manual of **SOFTLOK**.

Feedback Number for Status 8687 decoder and Bridge. Closing this Pop Up window can be done with the button [ESC].

1.3.10 Sequence Start

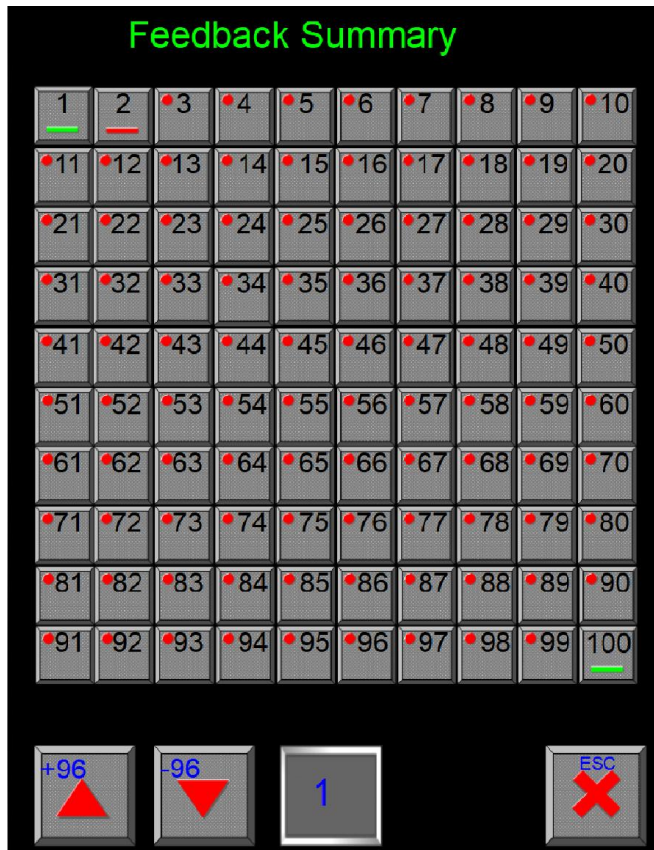


Here you see the control panel for the Sequence Starts; it looks like the Point/Signal Control. It works also similar.

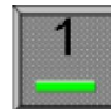
Red: S-Start = Off
Green: S-Start = On

Note: Number "0" will be always on each screen.

1.3.11 Feedback Monitor & Control



Here you can Monitor & Control all existing Feedback inputs.



Status: Input activated



Status: Input not activated



Status: Input unknown (Not yet activated)

After activating an input the status will be activated or not, now you can see if an input is already activated or not.

During Automatic control the next Symbols can appear:



Status: Expected feedback 21



Status: Stop Feedback 20, but not activated yet



Status: Stop Feedback 20, now activated



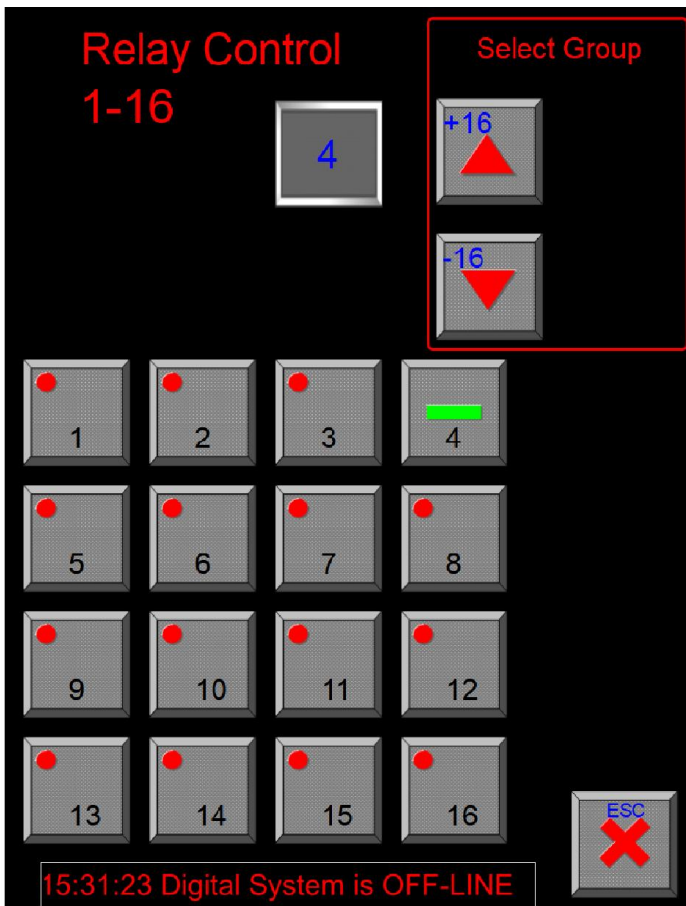
Status: Feedback 19 is Control input



Status: Block with Feedback 10 is released

This window is made for monitoring of all feedback inputs, but it's possible to control each input, just like at the PC (Master& Slave) in the graphical screens.

1.3.12 Relay Control

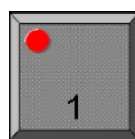


Here you can Control and monitor all Relays (PC -Relay card must be available in PC)

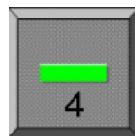
This relays will be control by **SOFTLOK** without any Digital system.

Relay card have 1...16 or 1...32 outputs.

Here Relay output 4 is activated



Relay is not activated

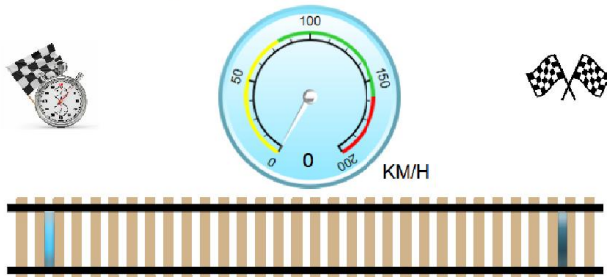


Relay is activated

Remark: (these settings are only available for the main user)

1.3.13 Speed Measurement

Speed Measurement

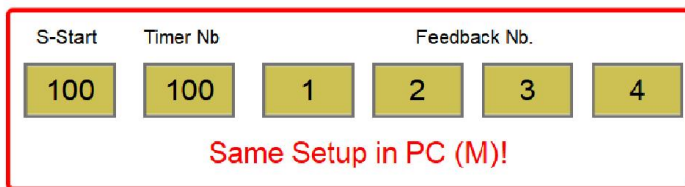
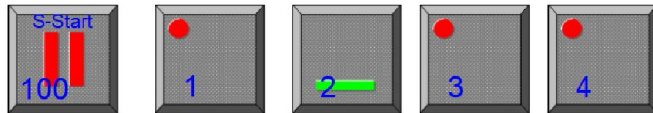


Now you see also speed measurement on the SL-Sever

First you have to make the setup in **SOFTLOK** (see manual).

Here you used the same settings as in **SOFTLOK**.

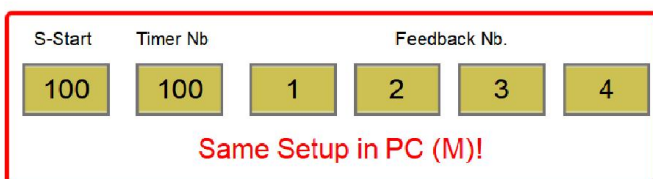
With S-Start you can enable/ Disable the speed measurement.



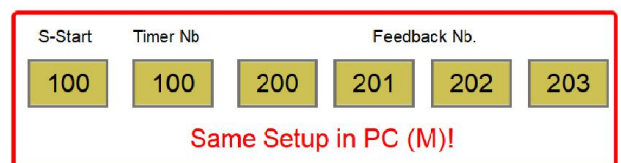
Touch for last measurement

Setup:

(These settings are only available for the main user)

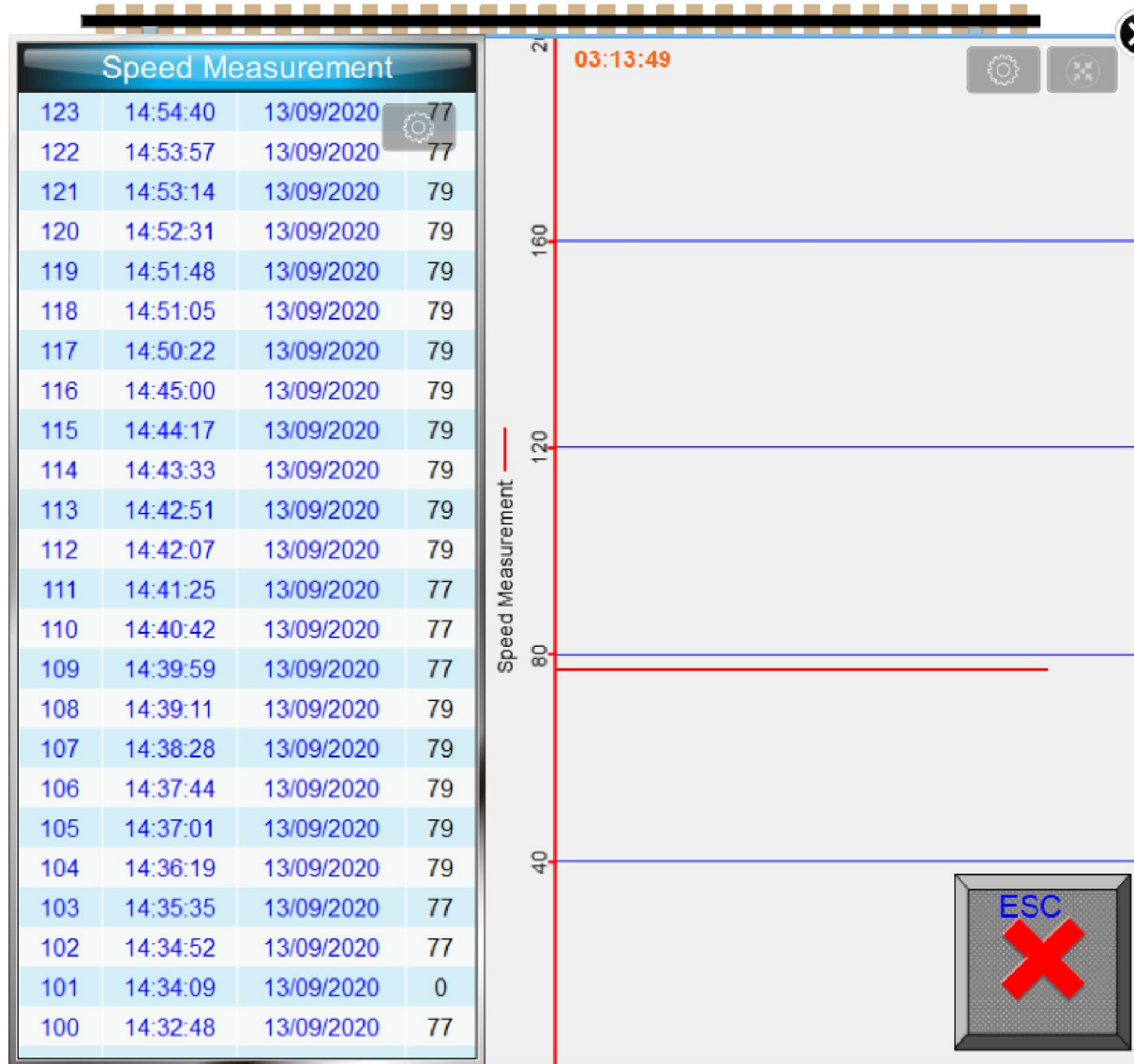
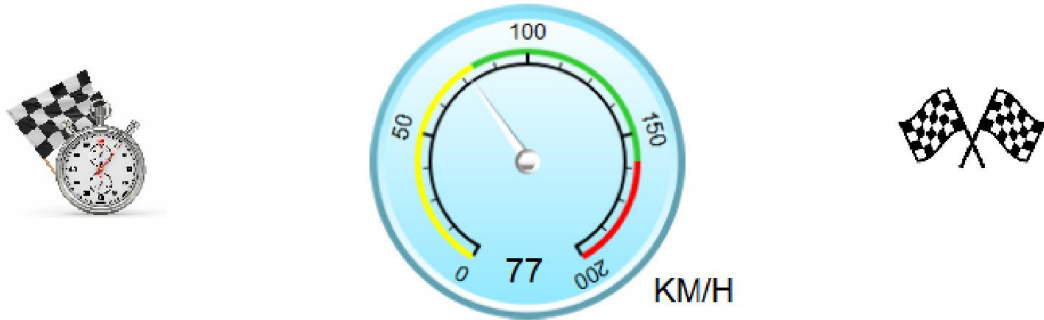


Then you have to introduce the same values which are done in **SOFTLOK** Master PC!



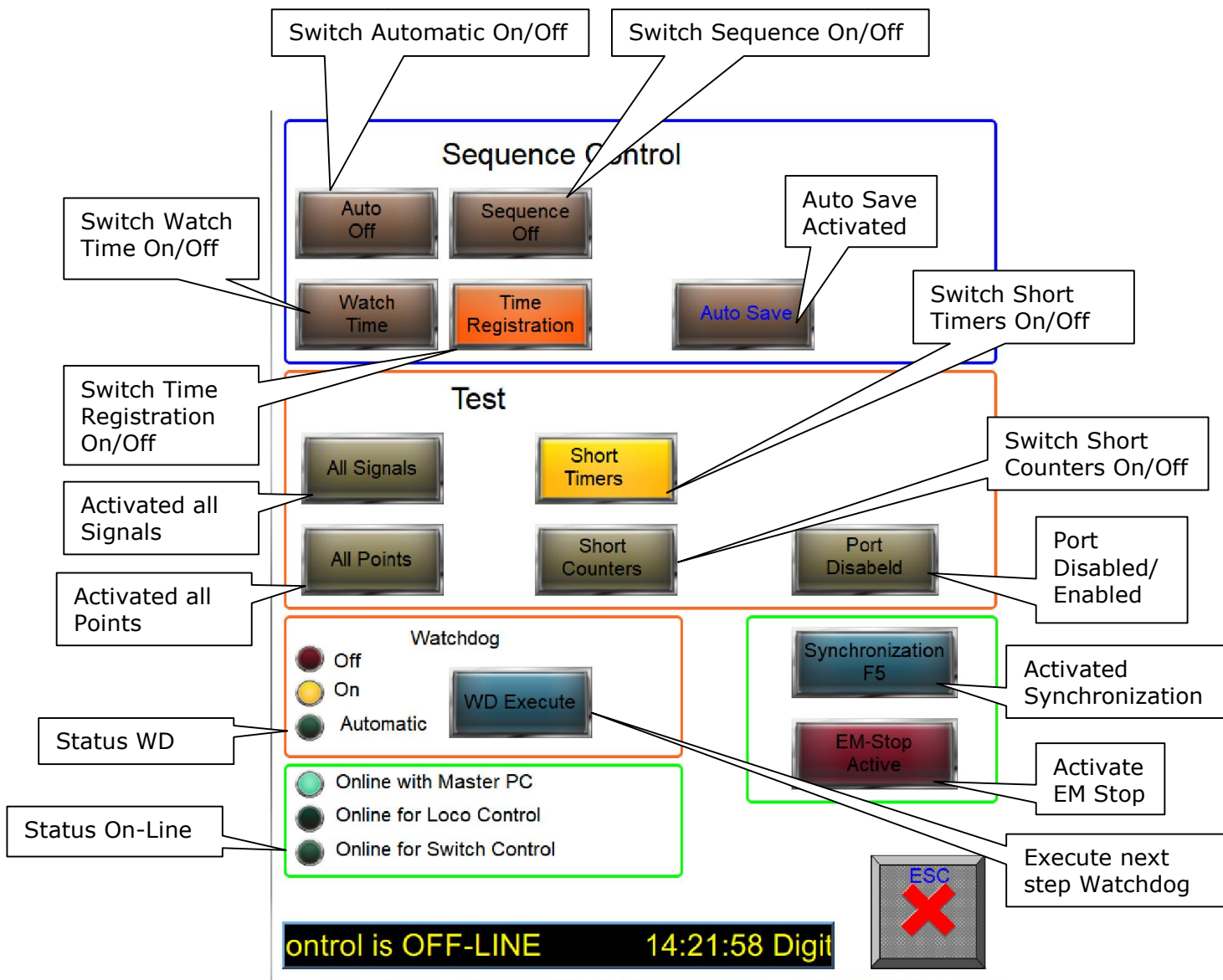
Last Measurement and graphical view:

Speed Measurement



Here you see the last measurements in Table and graphical. Each time, when there is a new measure it will be saved in this table.

1.3.14 Master Control & Settings



Simulation 1- 9



Activating "Port Disabled" will changes in "Port Disabled Off"
 Now you can set the simulation interval from 1-9.

1.3.15 Emergency Stop

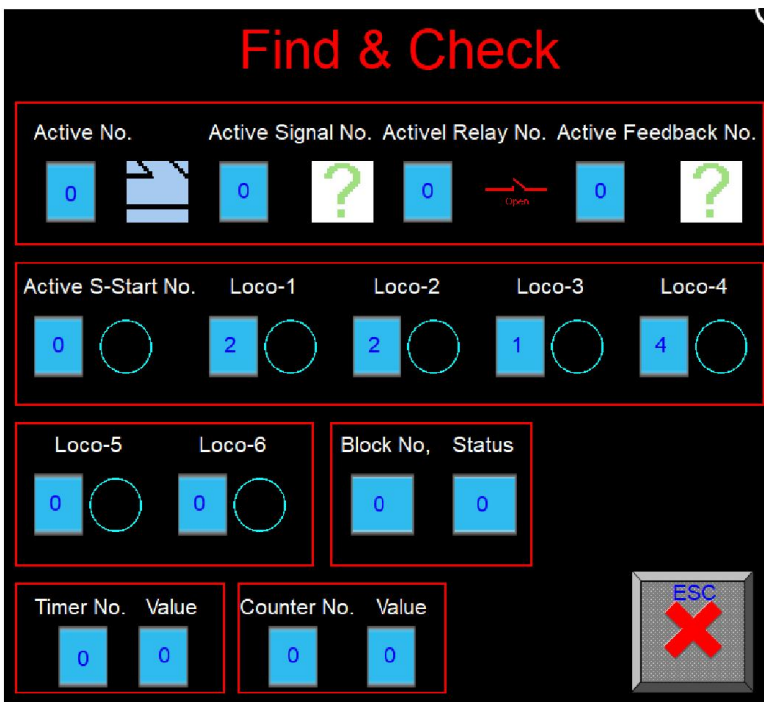
When an Emergency Stop is generated (by **SOFTLOK**) or user then you will see the next screen:



By activating "EM-Stop Active" you can release the emergency stop

1.3.16 Find & Check

Touch Pro Version in Main menu for open this window



With this pop-up window, you can find out which Point, Signal, Input, Relay and S-Start are used in Track overview screen in Master/ Slave PC.

Because in these screens there are no numbers available in there overview, you have always go to the Track overview Editor to look which number is which?

Now you click on the request item (master/ Slave PC) and see here which item is activated with the number and status, so you can also see of the status of a Point has the correct direction symbol.

For Loco Control 1-6, you see in one overview the S-Start which is used for start/ stop sequence.

Here you see Loco-1 and Loco-6 has the same S-Start, so both have selected the same loco number.

Here you can add/edit the Names, by selecting a name or an empty line. Then you can add/ edit the name in the window below, with the button "Edit Input" it will be finished.

Save DB in Loco Controller:

The above summary is a copy of all input which is done in the Setup Menu Loco Control 1-6.

When you want to add/edit from here, you must save this information.

After restart of the SL-Server (Power up) this data base will read and put it in memory of the Loco Control 1-6.

Backup:

If you place an USB Stick in SL-Server, you can backup this Data Base to an external device.

Maintenance data will be displayed in the DB table which will be automatically updated when this menu appear. When you want to store Loco Names & Maintenance Data externally, you can put a USB stick in the SL-Server for saving these Data.

With a separate program you can open this file and edit this table. (Please ask your reseller).

When you are finished with editing, you can transfer this file back to the SL-Server with the web interface.

Memory and Retentive Memory:

All Setup will be memorized in Retentive memory, so when the SL-Server makes a Power-Up, it will remember all your settings, all received Data from the SL-Master will be stored in normal memory, these values will be lost by power down.

Updates:

When a new version appears, you have the possibility to update your version for a newer one. Most of the time gives a newer version more functionality and resolving existing bugs. Also structures can be changed, so data on your system could be lost.



Please notice: Author is not responsibility for any lost of Data/ Settings etc.

1.3.18 Remove settings



Remove settings:

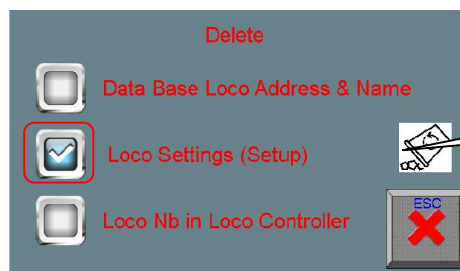
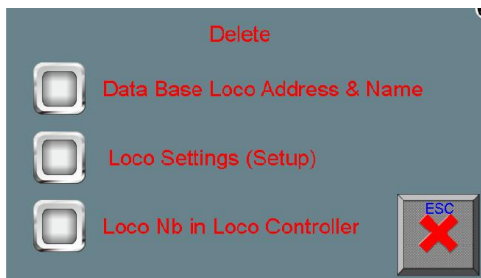
(These settings are only available for the main user)

For removing existing settings you can touch the wipe symbol.

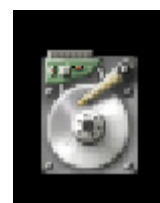


Press this basket symbol for at least 3 seconds, then a Pop-up menu will appear.

Erase Data



Erase Data

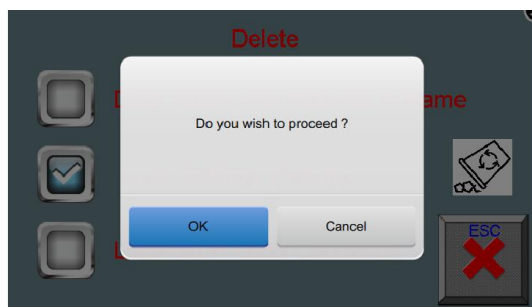


Here you can select what you want to erase?
You can toggle by clicking at the symbol of the button

- "Data Base Loco Address & Name" : Clear all text in Database
- "Loco Settings" : Clear all settings in loco control for loco 1...200
- "Loc Nb. in Loco Controller" : Clear the last chosen loco nr. (default =1)

If one or more is selected then the "Basket symbol" appears.

Press at the basket.... the next Pop-up menu appear



Click at "OK" to confirm this action or "Cancel" to abort this action.

1.3.19 IP Address Settings

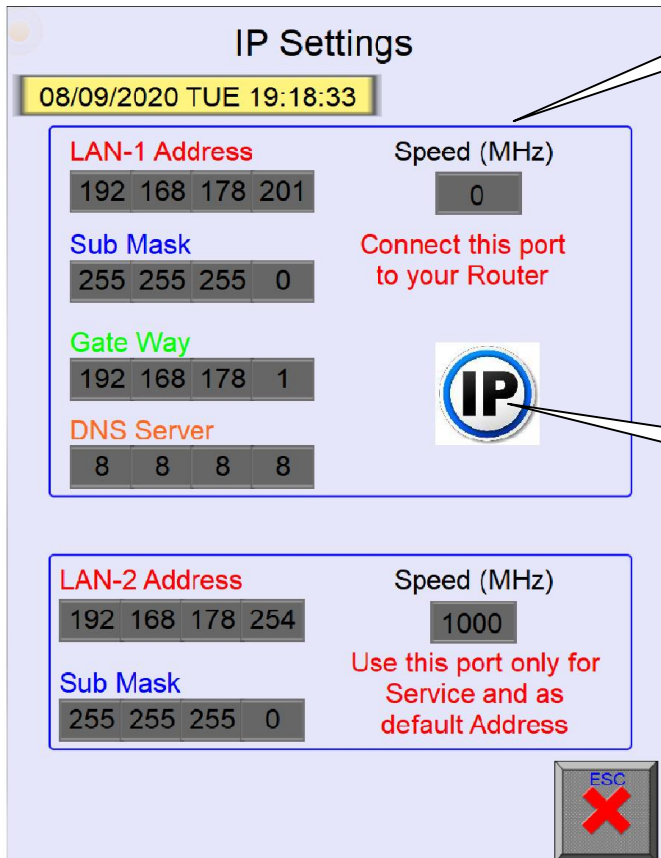
(These settings are only available for the main user)

Here you can change the IP Settings of your Device



Communication Speed between SL-Server and Router (10/100/100 Mps)

Opening this item must be acknowledged with "OK".



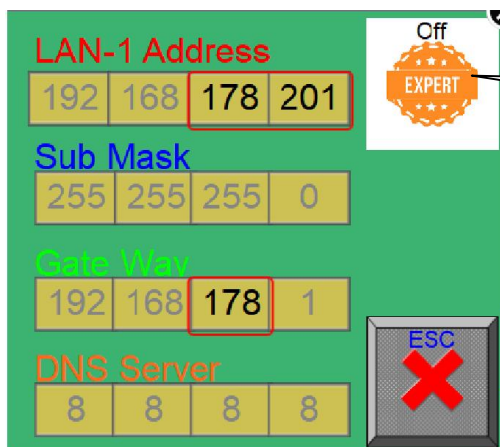
Now you can view LAN-1 / Sub mask address. If it's necessary, instead with the web browser. Please take care of it, if you change the IP-Address which is connected to your router (WIFI) then after changing you lost contact!

Touch here, if you want to change these settings

If the third value LAN-1 (here 178) is the same value of the third value (LAN-2), it could be given connection problems.

If you change the IP address, a new connection could be a problem (see also Update

procedure).



Touch here, if you want to change all values, only if you know what you are doing!

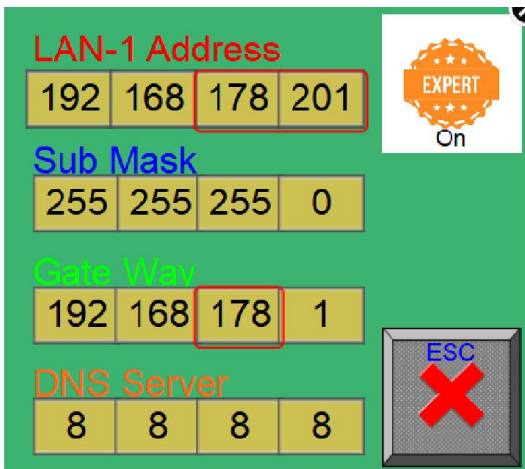
Normally, you have only to change these values, which are in the red box.

Number "178" must be same value of your network, "201" must be unused!

Touch [ESC] to return in previous menu.

 Last value (LAN-1 Address) must between 1-253.

Advice: If LAN-1 Address must be 178, change Lan-2 Address to another value!



LAN-1 Address
192 168 178 201

Sub Mask
255 255 255 0

Gate Way
192 168 178 1

DNS Server
8 8 8 8

EXPERT On

ESC

Now, you have the possibility to change everything, but be sure for the right settings. Most of the times you don't have to change these "Expert" values.

Changes will be automatically saved

Touch [ESC] to return in previous menu.



Preview Settings

Loco Go/Stop in Display Loco Controller

Loco V0 in Display Loco Controller

EM- Stop in Display Loco Controller

Auto Login Enabled


LAN-1 Settings (Default)

Enable Demo Track

 Clear

ESC

If you have filled some wrong numbers in the screen, during start up, the system will check your changes and correct them to default values.

 If you made changes of the values which are not in the red box, then you have to switch on the radio button of LAN-1 Settings (default) to



Preview Settings

Loco Go/Stop in Display Loco Controller

Loco V0 in Display Loco Controller

EM- Stop in Display Loco Controller

Auto Login Enabled

LAN-1 Settings Adapted

Enable Demo Track

 Clear

ESC

Now, there is to check of the LAN-1 settings during start.

1.3.20 Information

Information:

(These settings are only available for the main user)



After touching the information symbol a Pop-Up window appear with the next information:

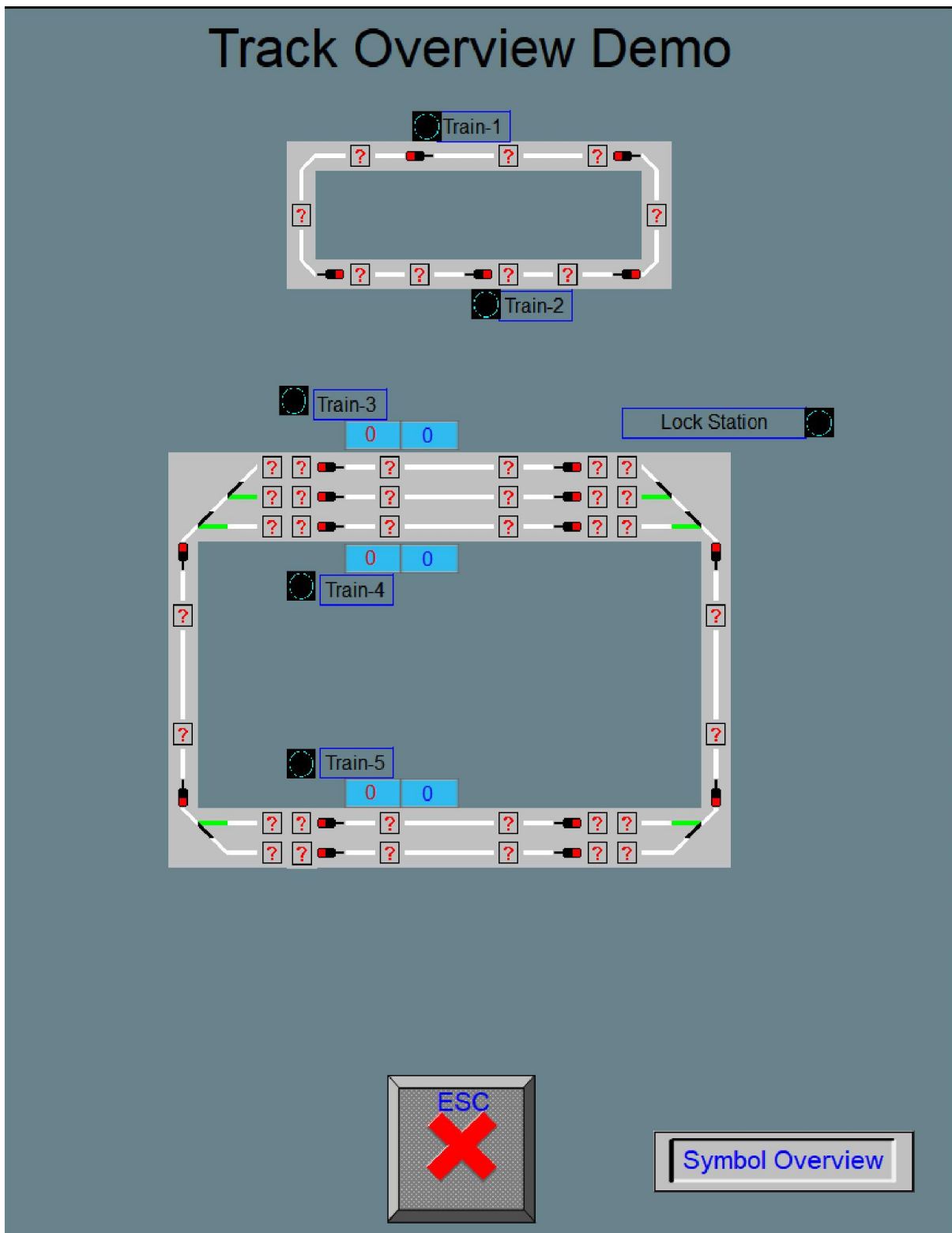
Control Panel

System Information

Project Date	2020 10 17	CPU Load	63
EBPro Version	60402	Reiceive Cycle	1.0
OS Version	2018 2 27		
Used Memory Pgm	10991 Kb		
Total Memory HMI	254820 Kb		
Free Memory HMI	215056 Kb		
Memory Load	15 %		
HMI Name	SL-Server		
MAC Address	00 0C 26 18 9A D3 10		
SL-TS_P_RS485_NoName_V5052_11			
© Copyright R. Taconis 2018-2020			

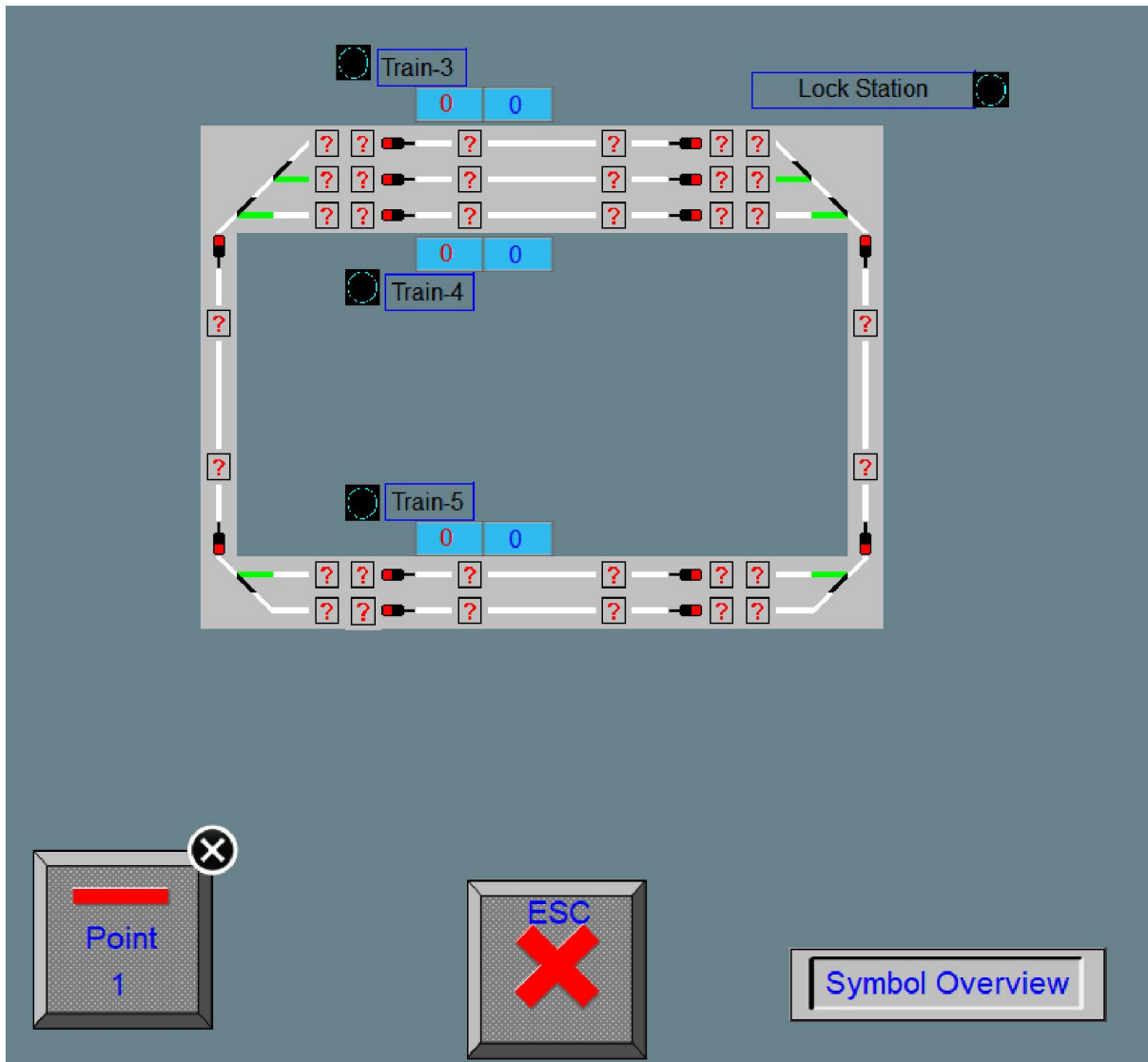
You will see here the some information about the system


1.4. Track overview

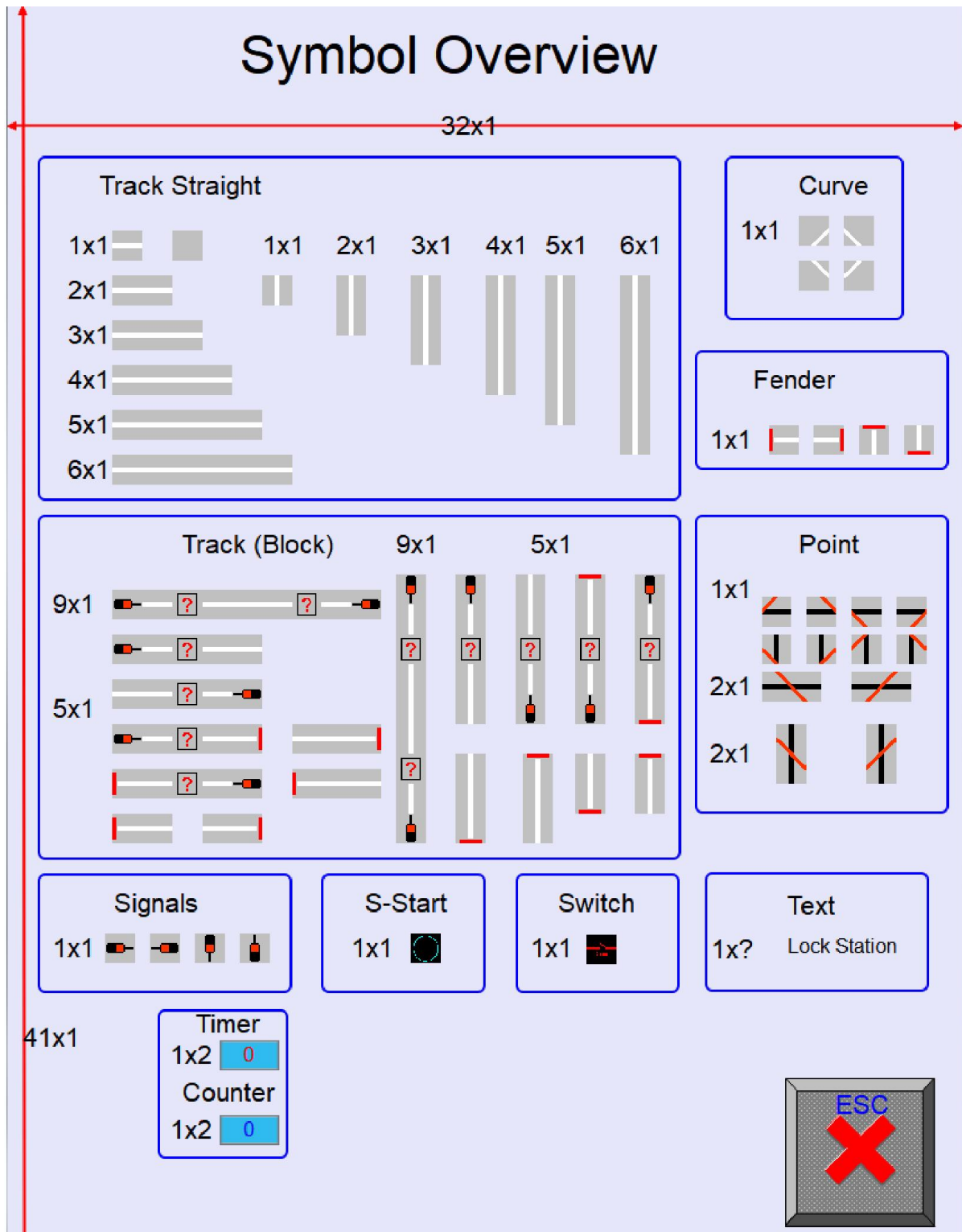


When you start the **SOFTLOK** Demo version, you can watch here the same as what you see on the Master and Slave PC.

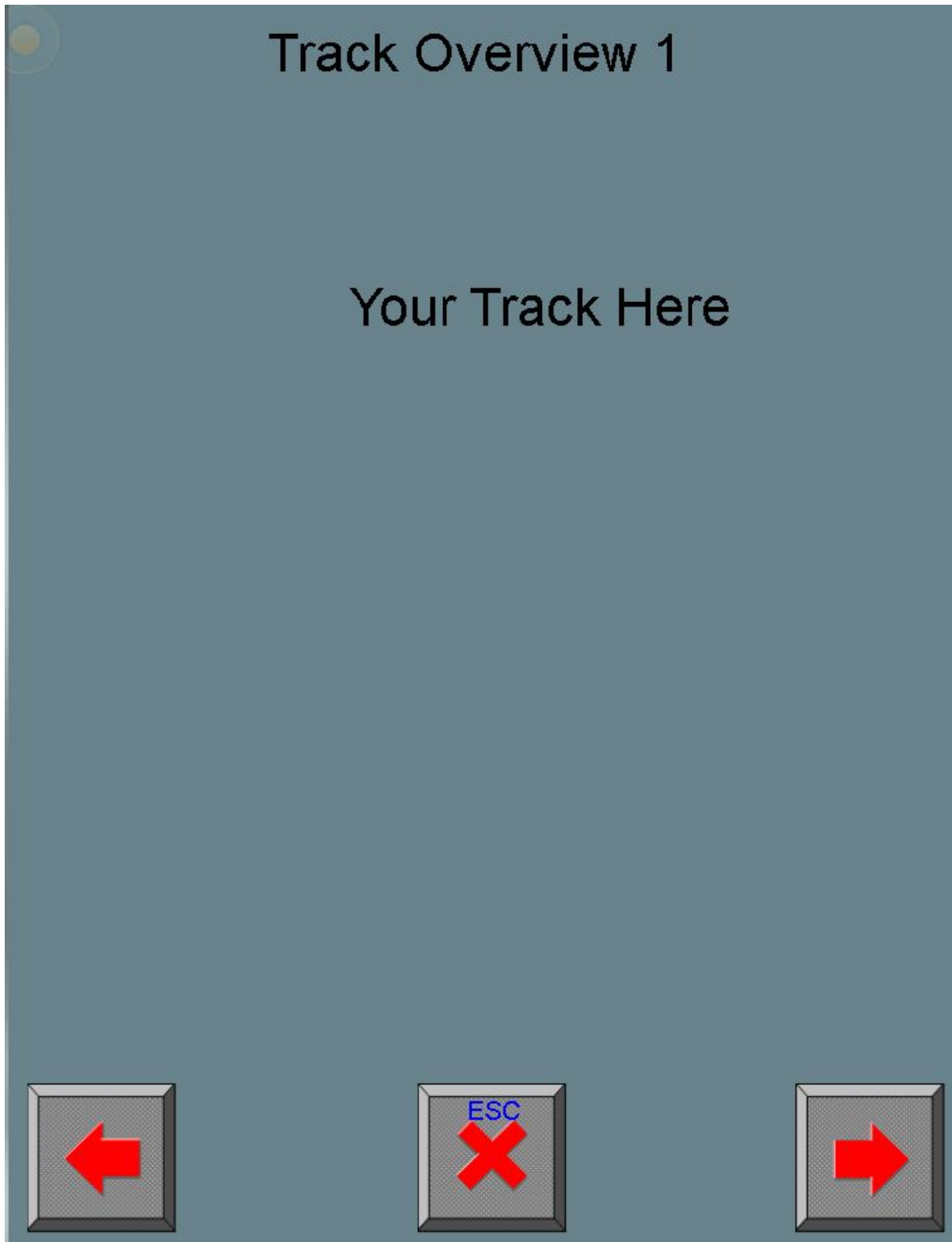
When you touch a symbol, like a Point, Signal or S-Start (you can use a special pencil) then a Pop-up button appear in the left corner below. You will also see the number of this symbol. By touching this button you can control Point with number 1.



 The status of this button gives not always the status of the real situation of the point itself.



The whole library with all symbols which are can use for the viewing of a track layout. Track straight, Curve and Fender have the possibility to show the feedback status. A block with one signal is build up as follow: Signal, 3x Feedback and block number, the block number show the sequence number which is occupied.



At request it's possible to make your track overview in one or more windows.
For this request is separate cost collectible.

Inform by your Supplier for the possibilities for your own track

1.5. Technical specifications**cMT-SVR-100 <=> SL-Server**

- Power supply 24 Volt DC/ 250 mA /max 0,5A
- 2x LAN connection (10/100/1000M)
- 1x RS232/RS485 connection
- Dimensions: 130 x 115 x 27 mm (B x H x D)
- Mounting Din rail 35mm

2.0. Update

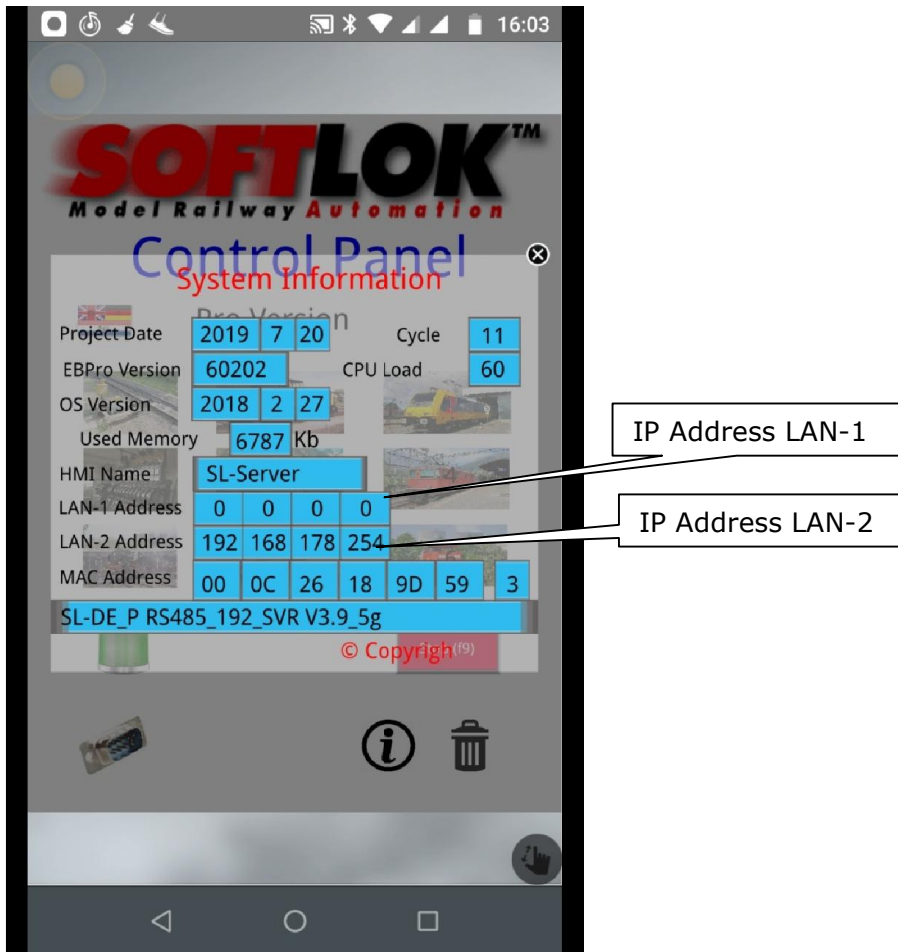
Update procedure (Application to cMT-SVR-100 with web browser):

Trouble Shooting (see at the end)

If there is an update available, it could be updated by end user.

- 1) cMT-SVR-100 is connected at (**LAN-1 or LAN-2**) to your computer
- 2) Power up the cMT-SVR-100 with 24V DC
- 3) Open your web browser and type your IP address for e.g. **192.168.178.254** (PC is connected to LAN-2)

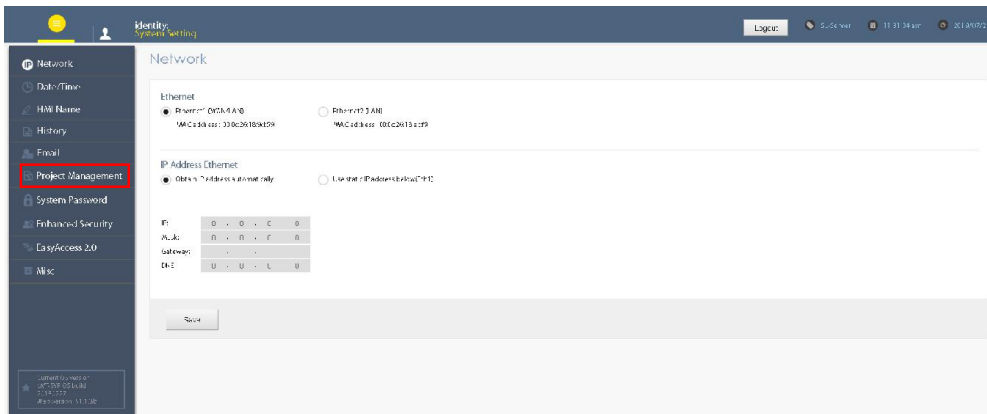
(You can find your IP address on your Smartphone)



4) After a while you will get the next screen



Choose "**System setting**" and Log in with [**sl**]

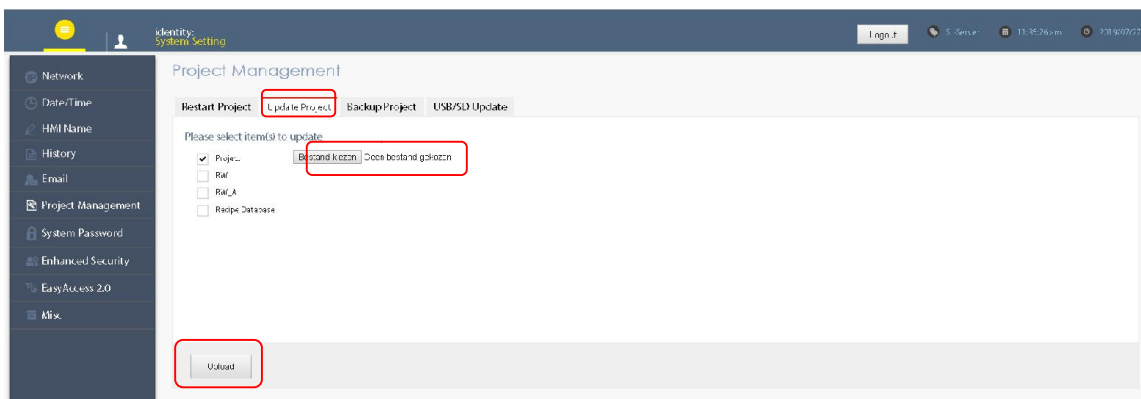


The next screen will appear
Click on "Project Management"

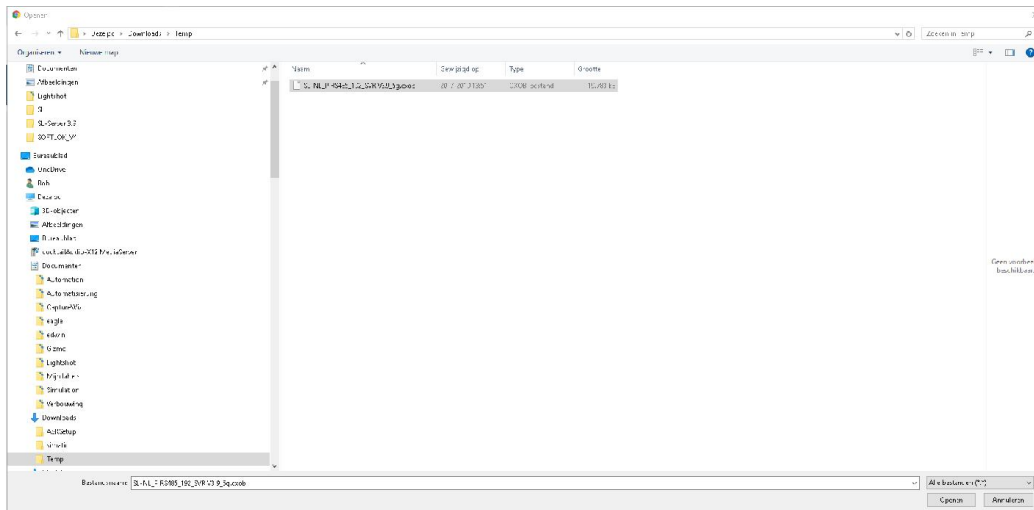


There are 2 possibilities to Upload a file: "Update Project" or "USB/SD Update"
(File must on PC or storage device)

[Update project to cMT-SVR]

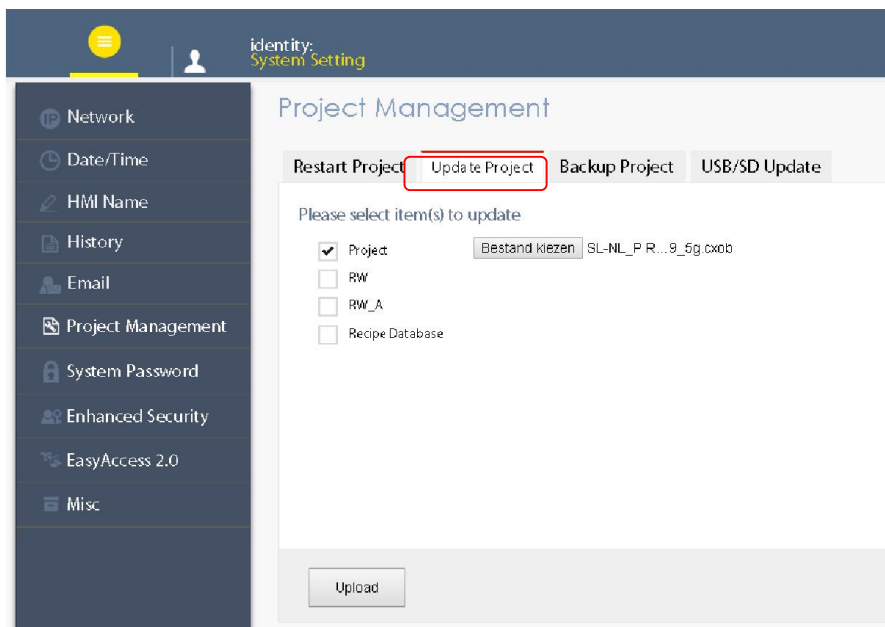


Choose file



SL-NL_P RS485_192_SVR V3.9_5g.cxob

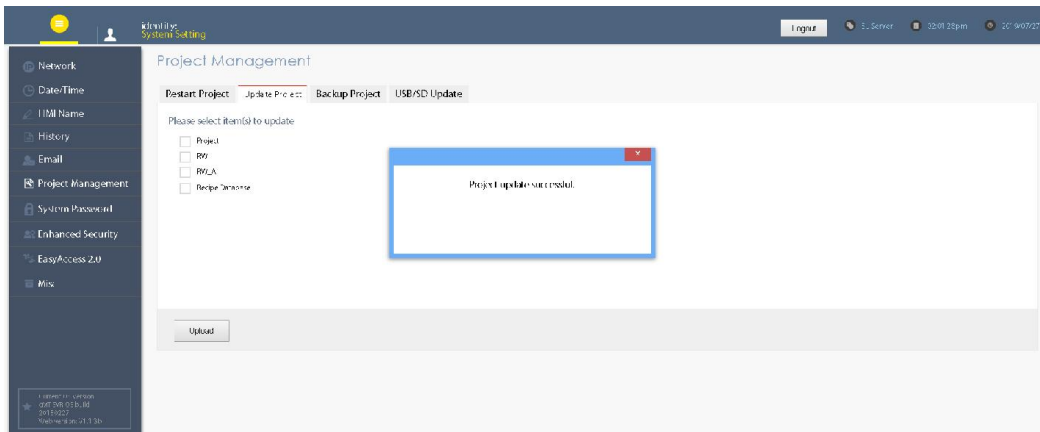
Click [Open]



Click on [Upload]

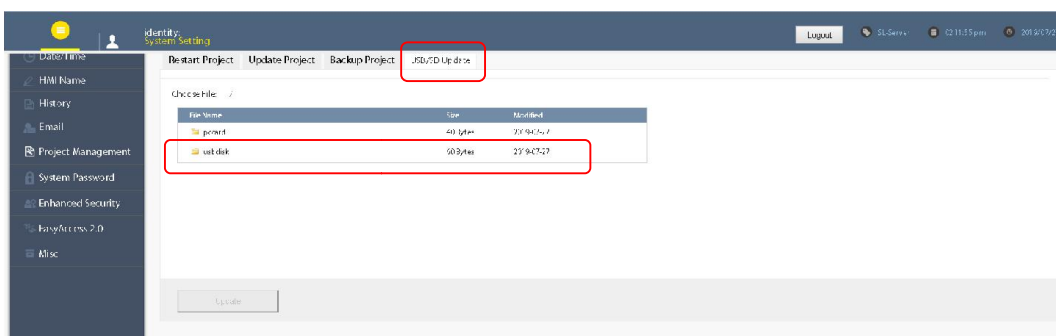


Update in progress



Update successful loaded Update with [USB/SD Update]

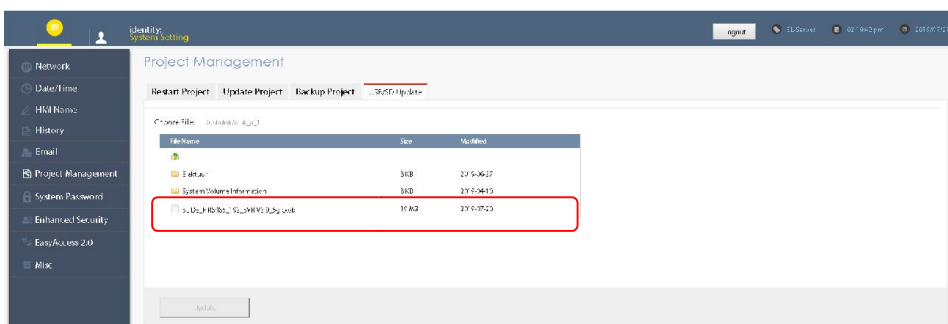
(File must be on USB stick, stick is connected to cMT-SVR USB slot)



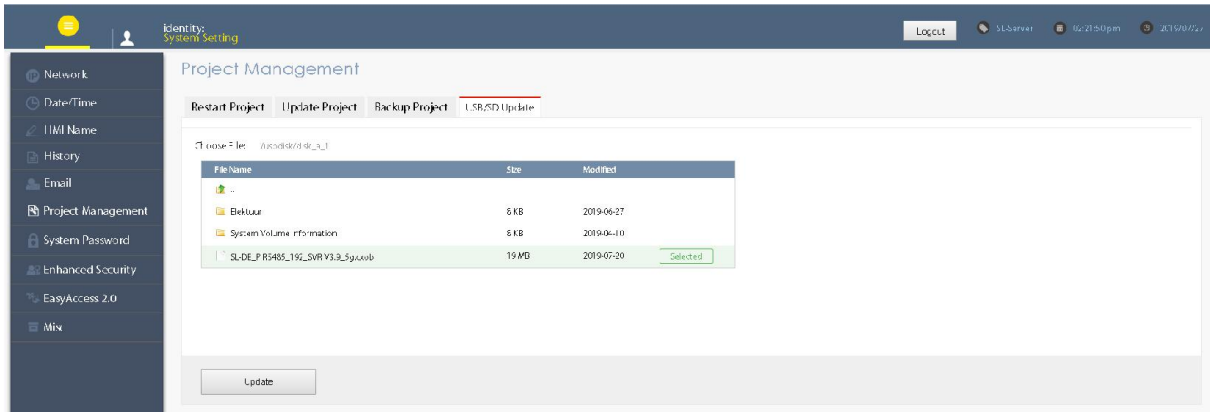
Click on [usb-disk]



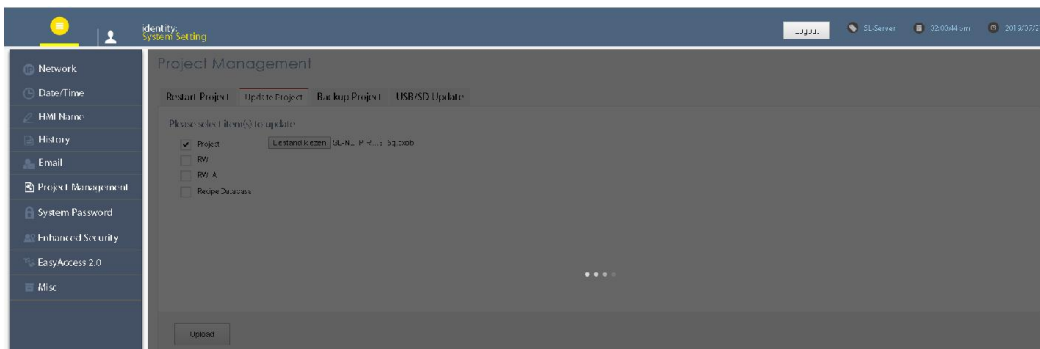
Click on [disk_a_1]



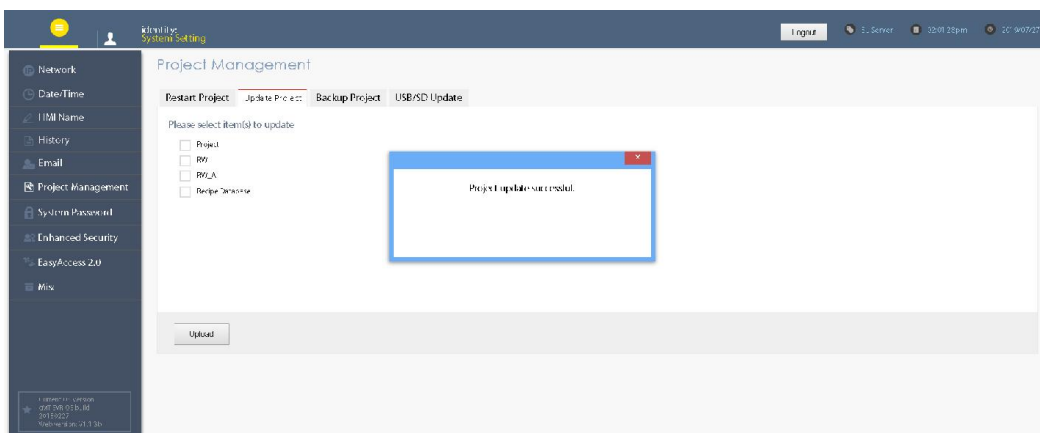
Now you see here the file which must be uploaded (click on this file)



Click on [Update]



Update in progress



Update successful loaded

Communication Settings:

Please check this settings, it could be different after Update



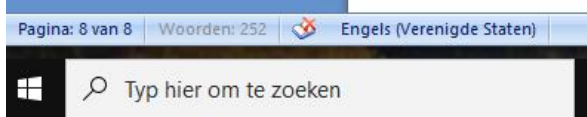
After Update the Baud rate could be set to 19K200 (Default setting).
Check also RS485 2 wire (HD)/ 4 wire (FD)

3.0. Trouble Shooting

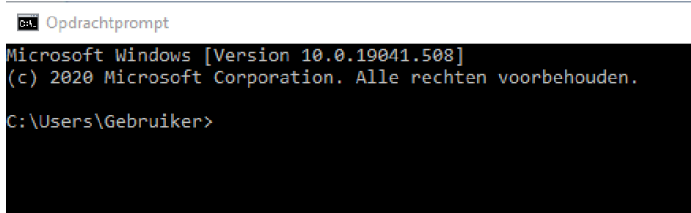
You can't get connection to the SL-Server (cMT)?

Check your IP address on your PC, is it in the same range?

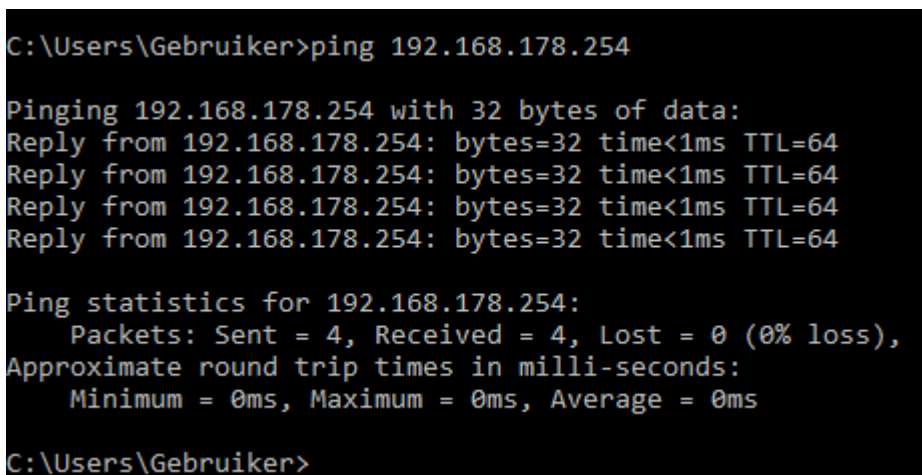
Open [cmd], search here



You will get this page



Type here: **ping 192.168.178.254**



Now you will see, there is a connection.

Webpage:



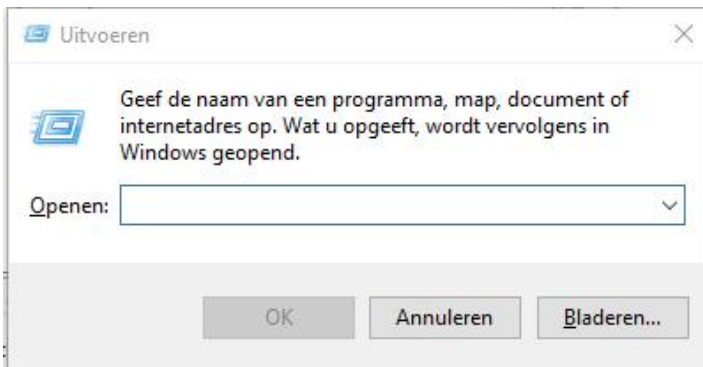
When you would me make connection with the web browser, sometimes you have to erase the last part (see in red marked). Then you try it again. Power down and up (cMT) after a while could also help!



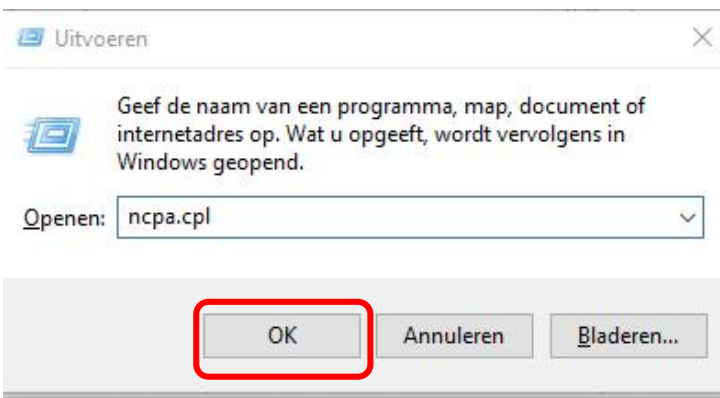
If you change the LAN Address with the web browser, you should power down and power up de cMT for correct displaying of the new values.

How to change IP Settings on your own PC?

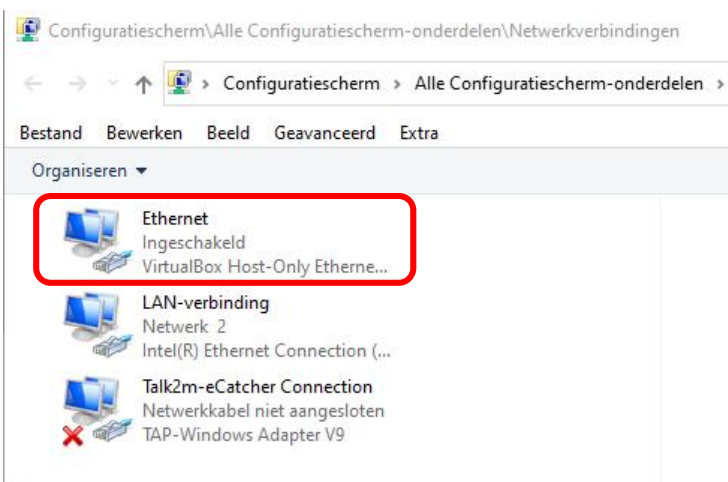
Use the Button combination "Window & R", you get the next screen



Type: ncpa.cpl



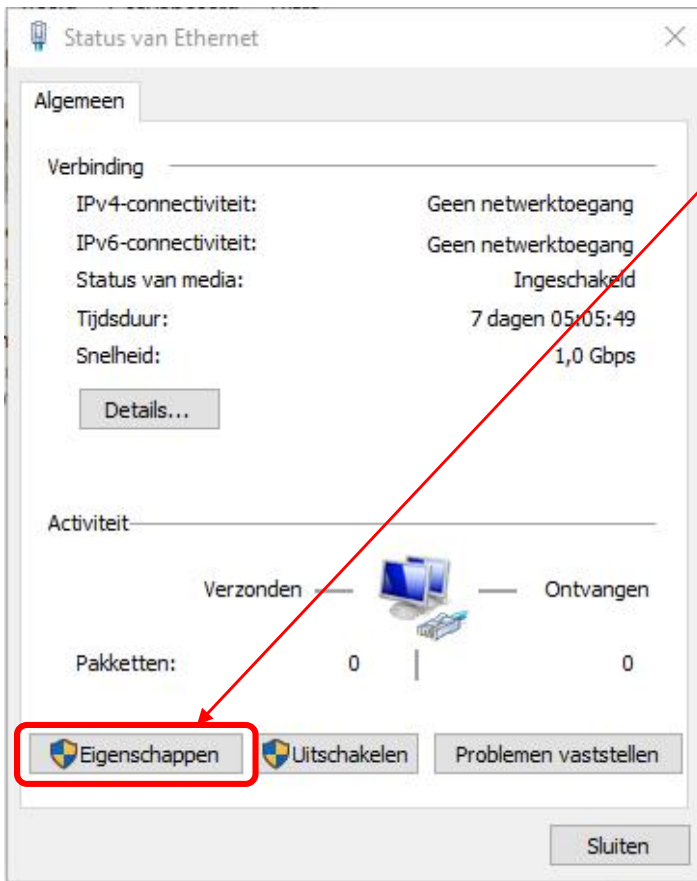
Enter [OK], you will see this screen



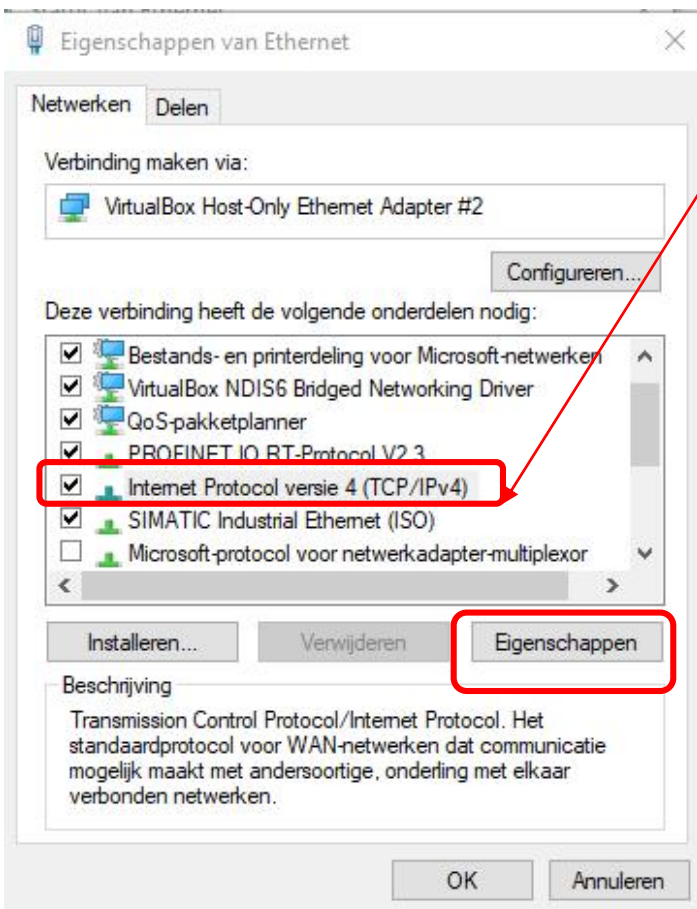
"

Click at "Ethernet", this your fix (cable connection)

The next screen appear



Click here



Select this item

Then, click here!

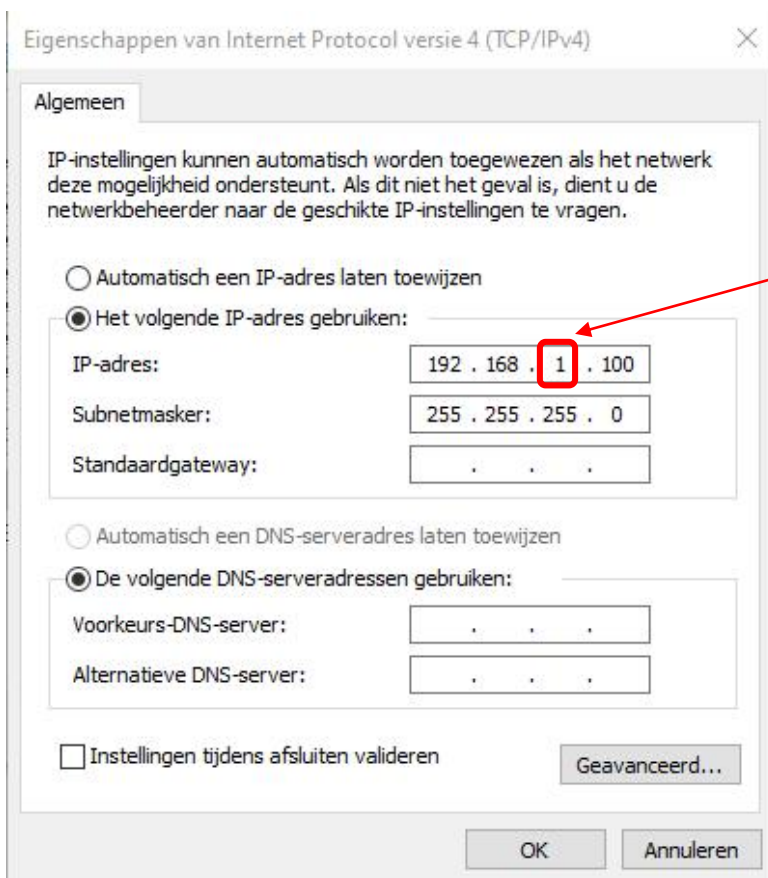
The next screen appear



Most of the time it's empty, because your PC get an IP address from your router (DHCP).

Now you have to change it manually.

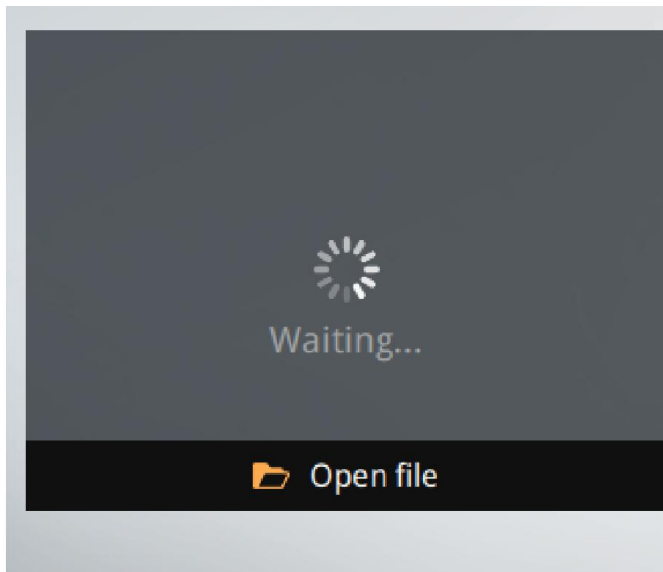
Select the next item



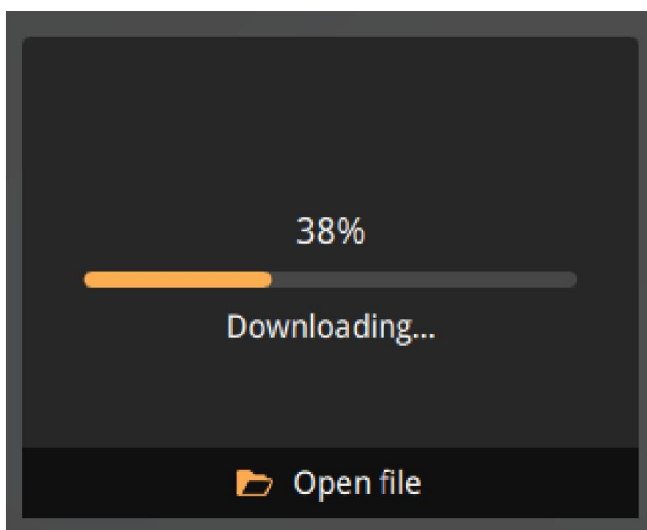
Fill here your new PC Address, the last value (100) here must be different than the SL-Server value!

This one must be have same value as the SL-Server!

After Click OK, you can check your connection with e.g. "Ping"

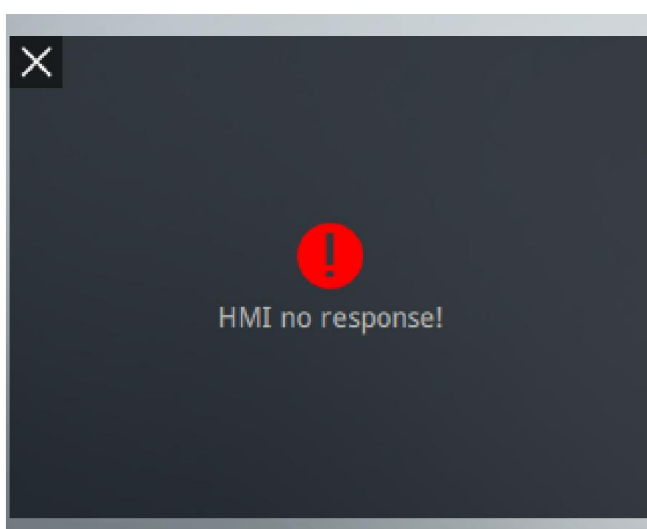
No Connection:

You will get this screen and takes too long to get the next screen!



or downloading stops!

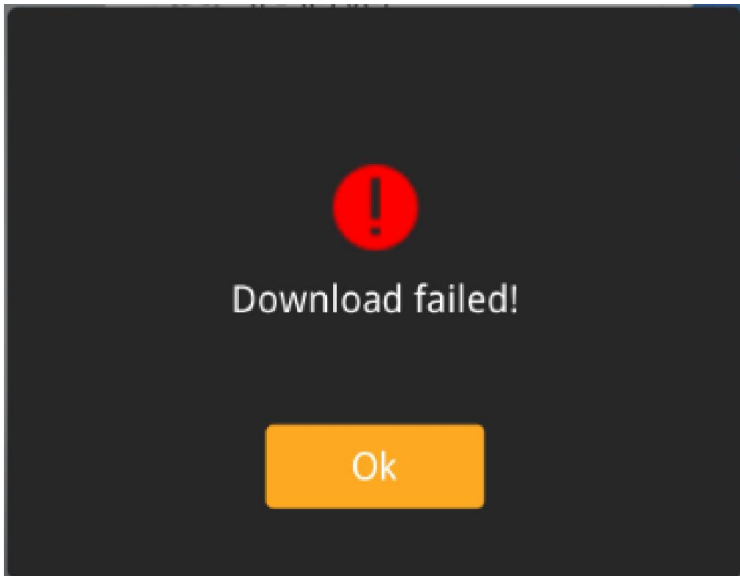
and you get the next screen.



Download is stopped or never start, please check your IP settings and your Wi-Fi connection, especially when you have more than one Wi-Fi routers?

Choose another one more close to your Smartphone.

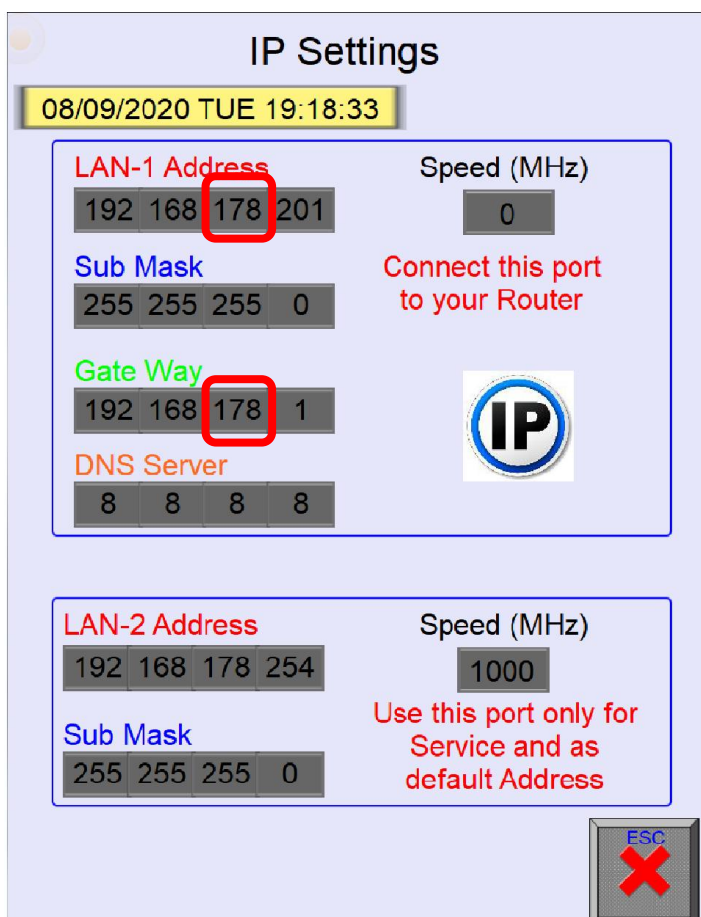
These problems are always a connection problem with router!



or this message

Normally, try again.

IP Settings:



Both on the same Network could be give a connection problem.

If you use the settings of LAN-1, change the settings for LAN-2!

Change only for LAN-2 "178" in another value!

No Start Button:



Licence

For AND

	Free	Pro	Private
Loco Controller	5	200	200
Multi User	1	6	6
Turn Table	No	Yes	Yes
Points Control	1-16	1-350	1-350
Signal Control	1-16	1-400	1-400
Extension Control	No	Yes	Yes
Saving Settings	Limited	All	All
Track View	No	No	Yes



Start button will not appear, after loading of an update it takes a little bit longer as normal, but must appear in one minute.

Power down the SL-server and restart and/or download the Update again!

Update older Version:

Liz **WARNING** sion

- 1) Update Version Not Correct
- 2) Please Update Newer Version
- 3) System runs only in Free

Version Mode 5040 5041

	Free	Pro	Privat
Lok-Steu		200	200
Anzahl A		6	6
Drehsche		Ja	Ja
Weichen		1-350	1-350
Signale stellen	1-16	1-400	1-400
Zusätzliche Funktionen	Nein	Ja	Ja
Einstellungen speichern	Nur teilweise	Alle	Alle
Gleisbild darstellung	Nein	Nein	Ja

After Restart:
Now Power up the SL-Server again

RESTART



This message appears when you upload an older version, which is already installed.

Type restart and power down the SL-Server, then try again, or reload a newer version.

Update unknown device:



Licence Free Version

ID & IPHONE

	Free	Pro	Private
Loco Controller	5	200	200
Multi User	1	6	6
Turn Table	No	Yes	Yes
Points Control	1-16	1-350	1-350
Signal C			1-400
Extension			Yes
Saving S			All
Track Vie			Yes

WARNING

1) This is Not a Legal Version

2) The SL-Server is Not delivered by Vendor of this software 

3) The SL-Server is reset by user 

4) Please contact your Vendor for more information

If you get this message, you don't have this device from the official vendors?

Please take contact with **SOFTLOK** Germany or **SOFTLOK** Netherlands.

Your Notice: